



SPARE PARTS EXPLODED VIEW
WALL-HUNG GAS BOILERS

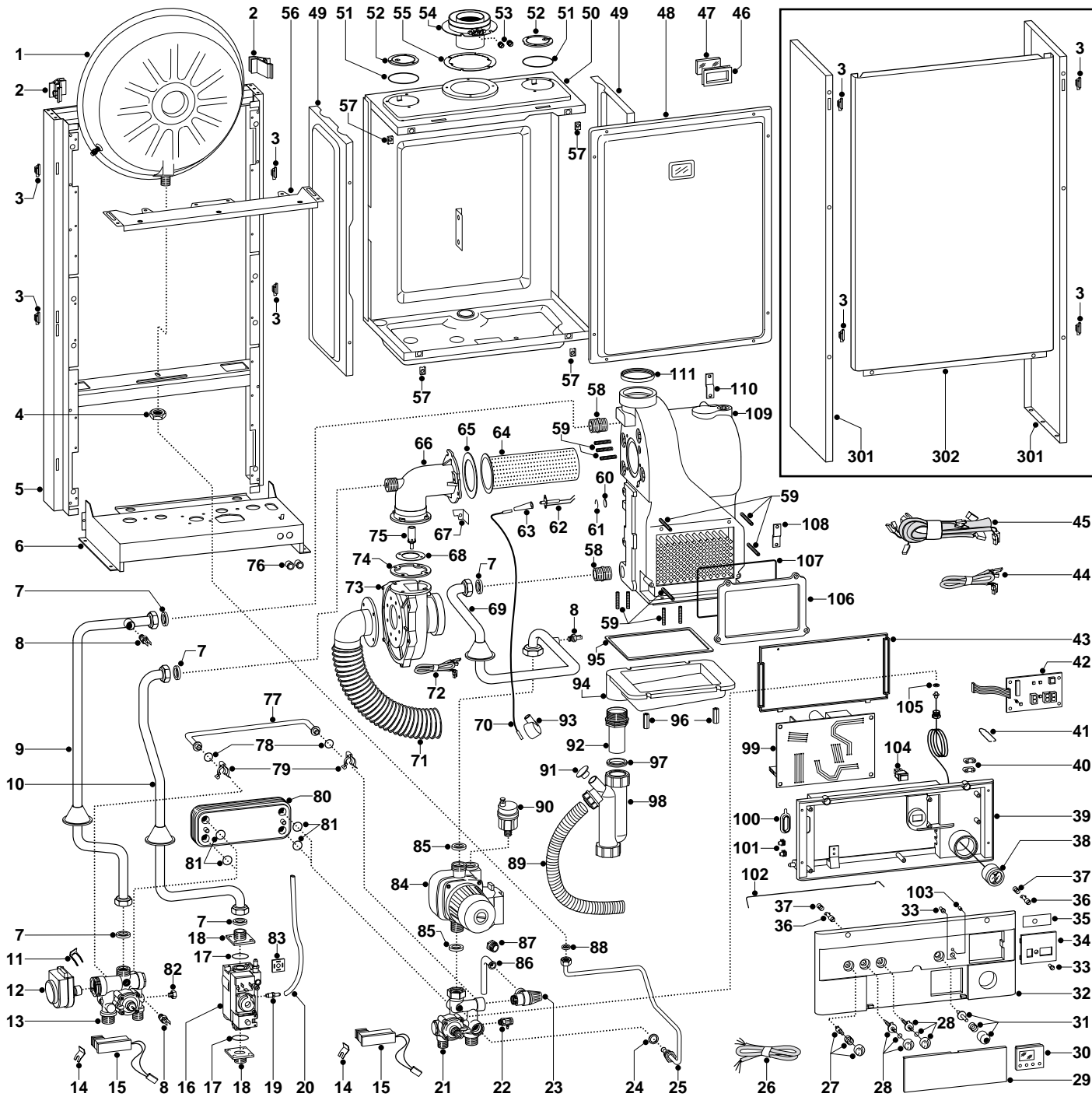
Models

ecoGENUS 24 MFFI

Edition 2

Current from Serial No:- 2320033400001 to 2320118000001





ER2001211016602001

MODELS	CHARACTERISTICS	SERIAL NO: VALIDITY	REF.
ECOGENUS 24 MFFI	METHANE	2320033400001	A
ECOGENUS 24 MFFI	LPG	2320033400001	B

PART.	CODE	DESCRIPTION	REF.	NOTE
1	573294	Expansion vessel		
2	999679	Expansion vessel insert		
3	574302	Casing support bracket (Plastic)		
4	573244	3/8" lock nut		
5	-----	Frame		11
6	-----	Hydraulic group support		11
7	573520	Gasket 3/4"		
8	998458	Temperature probe		
9	998655	Pipe (C.H. flow)		
10	998656	Pipe (gas valve/burner jet)		
11	997077	Fixing clip (motor)		
12	997147	Motor (3-Way valve)		
13	998127	Flow group		
14	573824	Bracket (m/flow microswitch)		
15	995296	Micro switch set (main flow & D.H.W.)		
16	571438	Gas valve		
17	565048	O-ring gasket (gas valve)		
18	999536	Union (gas valve)		
19	573793	Intake (pressure - control valve)		
20	573576	Compensation tube		
21	998144	Return group		
22	573727	Drain valve		
23	573172	Safety valve (1/2" 3 bar)		
24	573528	Gasket 1/2"		
25	573311	Pipe (expansion vessel)		
26	999424	Wiring (power supply)		
27	573302	Summer/Winter selector kit		
28	998747	Control knob kit		
29	998661	Door (instruction/time clock)		
30	997207	Time clock		
31	998772	On/off push button kit		
32	998778	Control panel (front)		
33	998751	Button (reset)		
34	999073	Cover (display)		
35	998766	Film (display)		
36	998381	Pin (front cover)		
37	998739	Fixing spring (front cover)		
38	571649	Pressure gauge		
39	-----	Control panel		11
40	571562	Cable clamp		
41	999993	Fixing spring (control panel)		
42	998765	P.C.B. (display)		
43	-----	Cover		11
44	999426	Low voltage wiring		
45	998676	High voltage wiring		
46	998076	Gasket (sight glass)		
47	998075	Sight glass		
48	574104	Panel (sealed chamber - front)		
49	573247	Panel (sealed chamber - side)		
50	-----	Sealed chamber		11
51	573865	Flue gasket		
52	573330	Air return cover		
53	573326	Flue intake plug		
54	999400	Flue exhaust manifold / header		
55	573337	Gasket (flue manifold)		
56	572984	Casing support bracket		
57	570717	Spring (fastening)		
58	998666	Nipple (gas - 3/4" M/M)		
59	999523	Dowel (M6x35)		
60	998782	Sight glass (burner)		
61	999227	Retaining ring (D=16mm)		
62	998672	Electrode (Ignition/Detection)		
63	998767	Cap (electrodes)		
64	998668	Burner		
65	998680	Gasket (elbow)		

ER2001211016602.001

PART.	CODE	DESCRIPTION	REF.	NOTE
66	998788	Elbow (fan)		
67	-----	Flame mirror		11
68	998786	Diaphragm (fan elbow)		
69	998654	Pipe (C.H. return)		
70	998459	Electrode cable (resistive)		
71	999071	Pipe (fan suction silencer)		
72	998889	Fan cable & sensor		
73	998888	Fan		
74	998681	Gasket (fan inlet)		
75	998651	Injector (G20)	A	
75	999946	Injector (G30)	B	
76	570772	Cable holder		
77	998065	By-pass pipe		
78	998077	O-ring gasket		
79	998064	Spring (by-pass pipe)		
80	573295	Secondary exchanger (p-type 27kW)		
81	573825	O-Ring (secondary exchanger)		
82	570615	1/8" Brass plug		
83	573022	Clamp		
84	997151	Pump		
85	569387	Gasket 1"		
86	999524	Pipe (safety valve)		
87	998567	Nut (pipe - safety valve)		
88	573521	Gasket 3/8"		
89	998413	Pipe (condensate - plastic)		
90	564254	Auto air vent		
91	998792	Cap (trap filling)		
92	998412	Pipe (drain - plastic)		
93	999951	Cap (spark generator)		
94	998787	Condensate tray (aluminium)		
95	998808	Gasket (adhesive - 10x5 mm)		
96	998784	Fixing nut (tray rear)		
97	573768	Gasket (airtight - condensate trap)		
98	998791	Condensate trap		
99	998801	P.C.B. (main)		
100	998382	Grommet (regulation access)		
101	569720	Blind grommet		
102	999992	Fixing spring (control panel)		
103	998653	L.E.D. lens		
104	569424	On/off neon switch		
105	569390	Gasket 1/4"		
106	998777	Aluminium inspection lid		
107	573766	Front cover gasket		
108	-----	Bottom fixing bracket		11
109	998670	Main exchanger (aluminium)		
110	-----	Top fixing bracket		11
111	998423	Lip gasket (D=66 mm)		
301	998414	Case panel (side)		
302	998478	Case panel (front)		
311	999133	Outdoor sensor		12

NOTE	DESCRIPTION
11	Not supplied as a spare part
12	Not illustrated

PART NOTIFICATION OF CHANGES	
	Spares listed below are not interchangeable with those listed in Ed.1
8	998458 - Temperature probe - replaces code 569236 - from serial number: 2320033400001
75	999946 - Injector (G30 - LPG) - Not listed on Edition 1