



SPARE PARTS EXPLODED VIEW  
WALL-HUNG GAS BOILERS

Models

**GENUS 23 MFFI UK**

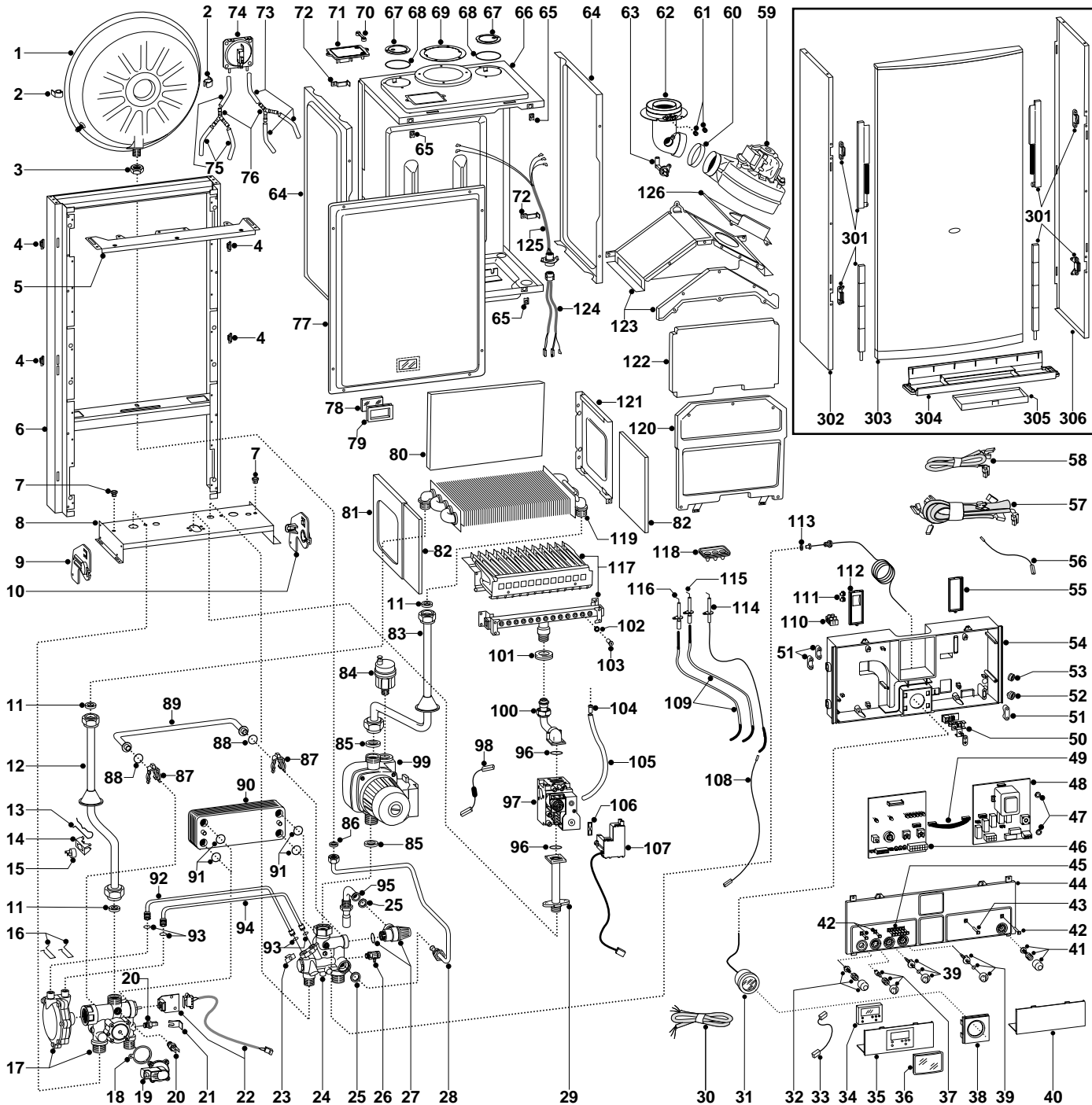
**GENUS 27 MFFI UK**

---

Edition 3

Current from Serial No:- 2320004900093 to -----





MODELS	CHARACTERISTICS	SERIAL NO: VALIDITY	REF.
GENUS 23 MFFI UK	METHANE	2320004900093	A
GENUS 23 MFFI UK	LPG	2320004900093	B
GENUS 27 MFFI UK	METHANE	2320004900093	C
GENUS 27 MFFI UK	LPG	2320004900093	D

ER2000211010103001

PART.	CODE	DESCRIPTION	REF.	NOTE
1	573294	Expansion vessel		
2	999679	Expansion vessel insert		
3	573244	3/8" lock nut		
4	574302	Casing support bracket (Plastic)		
5	572984	Casing support bracket		
6	-----	Frame		11
7	570772	Cable holder		
8	-----	Hydraulic group support		11
9	998042	Hydraulic support bracket (L/H)		
10	998041	Hydraulic support bracket (R/H)		
11	573520	Gasket 3/4"		
12	997199	Pipe (main exchanger - 3 way group)	AB	
12	997200	Pipe (main exchanger - 3 way group)	CD	
13	998043	Mounting bracket (overheat thermostat)		
14	997224	Fixing spring (overheat thermostat)		
15	997206	Thermostat (overheat)		
16	573809	Spring (water venturi)		
17	998069	3-way/main flow group		
18	571547	Diaphragm (main flow switch)		
19	998099	Main circuit flow switch		
20	569236	Temperature probe (C.H.W.)		
21	573824	Bracket (m/flow microswitch)		
22	998921	Microswitch		
23	571838	Pipe fixing clip		
24	998072	Return group		
25	573528	Gasket 1/2"		
26	573727	Drain valve		
27	573172	Safety valve (1/2" 3 bar)		
28	573311	Pipe (expansion vessel)		
29	997202	Pipe (gas inlet)		
30	998012	Cable (power supply)		
31	571649	Pressure gauge		
32	573300	Push button kit		
33	997180	Cable (time clock)		
34	997208	Time clock		
35	997205	Cover (with time clock insert)		
36	997142	Cover (time clock)		
37	573302	Summer/Winter selector kit		
38	572948	Cover (pressure gauge)		
39	573301	Regulation knob kit		
40	571628	Inspection Cover (R.H.)		
41	573303	On/off push button kit		
42	571550	Power Indicator L.E.D. lens		
43	572659	Flue L.E.D. cover (white)		
44	999504	Control panel cover		
45	571551	Temperature L.E.D. lens bank		
46	953045	Printed circuit board (E C-MI/FFI)		
47	569711	Nylon bush (10mm)		
48	952981	Printed circuit board (EI A-MFFI)		
49	952610	Cable (P.C.B.)		
50	-----	Terminal board		11
51	571562	Cable clamp		
52	569458	Cable holders silicone D.2		
53	573534	Cable holder D.75		
54	999329	Control panel		
55	569713	Cable holder cover (R.H.)		
56	999255	Cable (earth)		
57	574272	High voltage wiring		
58	998915	Low voltage wiring		
59	572990	Fan	CD	
59	998807	Fan	AB	
60	573343	Gasket (fan inlet)		
61	573326	Flue intake plug		
62	573333	Flue (exhaust manifold / header)		
63	573314	Venturi (exhaust/manifold header)		

ER20002110103001

PART.	CODE	DESCRIPTION	REF.	NOTE
64	573247	Panel (sealed chamber - side)		
65	570717	Spring (fastening)		
66	-----	Sealed chamber		11
67	573330	Air return cover		
68	573865	Flue gasket		
69	573337	Gasket (flue manifold)		
70	573329	Pressure intake cover		
71	997203	Support plate (air pressure switch)		
72	998108	Cable clamp		
73	569662	Silicone pipe		
74	571651	Air pressure switch		
75	571575	Silicone pipe (positive signal)		
76	573327	"Y" piece (air pressure)		
77	573344	Panel (front - sealed chamber)		
78	998075	Sight glass		
79	998076	Gasket (sight glass)		
80	998130	Insulation panel (rear)	CD	
80	998132	Insulation panel (rear)	AB	
81	573243	Panel (L/H - combustion chamber)		
82	998128	Insulation panel (side)		
83	572906	Pipe (main exchanger - pump)	CD	
83	573313	Pipe (main exchanger - pump)	AB	
84	564254	Auto air vent		
85	569387	Gasket 1"		
86	573521	Gasket 3/8"		
87	998064	Spring (by-pass pipe)		
88	998077	O-ring gasket		
89	998065	By-pass pipe		
90	571646	Secondary exchanger (p-type 23kW)	AB	
90	573295	Secondary exchanger (p-type 27kW)	CD	
91	573825	O-Ring (secondary exchanger)		
92	573086	Pipe (main flow switch - positive signal)		
93	571807	O-Ring (20-18)		
94	573087	Pipe (main flow switch - negative signal)		
95	999524	Pipe (safety valve)		
96	571965	O-Ring (13)		
97	999089	Gas valve (SIT 845 SIGMA)		
98	998008	Cable (resistive)		
99	997150	Pump	AB	
99	997151	Pump	CD	
100	574194	Pipe (gas valve/burner)		
101	569443	Silicone seal		
102	572138	Burner jet washer		
103	570248	Burner jet (NG 1.25)	AC	
103	570251	Burner jet (LPG 0.72)	BD	
104	573325	Rivet		
105	573576	Compensation tube		
106	574279	Gasket		
107	999166	Spark generator		
108	571657	Cable (detection electrode/P.C.B.)		
109	571662	Cable (ignition electrode)		
110	571787	Terminal board (two pole)		
111	569720	Blind grommet		
112	569714	Cable holder cover (L.H.)		
113	569390	Gasket 1/4"		
114	573441	Electrode (Detection)		
115	569560	Electrode (Ignition R.H.)		
116	569561	Electrode (Ignition L.H.)		
117	572271	Burner 13 ramp (natural gas)	A	
117	572277	Burner 13 ramp (LPG)	B	
117	572343	Burner 15 ramp (natural gas)	C	
117	572372	Burner 15 ramp (LPG)	D	
118	998147	Ignition electrode cable rubber		
119	998138	Main exchanger	AB	
119	998139	Main exchanger	CD	

<b>PART.</b>	<b>CODE</b>	<b>DESCRIPTION</b>	<b>REF.</b>	<b>NOTE</b>
120	572648	Panel (front - combustion chamber)	CD	
120	997766	Panel (front - combustion chamber)	AB	
121	573242	Panel (R/H - combustion chamber)		
122	998129	Insulation panel (front)	CD	
122	998131	Insulation panel (front)	AB	
123	997767	Flue hood (sealed chamber)	AB	
123	998103	Flue hood	CD	
124	999119	Cable (P.C.B./fan/air pressure switch)		
125	998106	Cable (fan/air pressure switch)		
126	573465	Fixing plate (fan)	CD	
301	571993	Front panel runner kit		
302	573012	Case panel (L.H. side)		
303	999571	Case panel (front)		
304	998066	Bottom cover		
305	997166	Warning plate lid		
306	573011	Case panel (R.H. side)		
361	569281	Burner jet 1.25mm full kit (NG)		12
362	569282	Burner jet 0.72 full kit (LPG)		12

<b>NOTE</b>	<b>DESCRIPTION</b>
11	Not supplied as a spare part
12	Not illustrated

<b>PART. NOTIFICATION OF CHANGES</b>	
	<b>Spares listed below are not interchangeable with those in Ed.1 or Ed.2</b>
<b>2</b>	999679 - Expansion vessel insert - replaces code 573310 from serial number: 2320004900093
<b>9</b>	998042 - Hydraulic support bracket (L/H) - replaces code 574292 from serial number: 2320004900093
<b>10</b>	998041 - Hydraulic support bracket (R/H) - replaces code 574291 from serial number: 2320004900093
<b>13</b>	998043 - Fixing spring (overheat thermostat) - not listed on original drawing
<b>17</b>	998069 - 3-way/main flow group - replaces code 573121 from serial number: 2320004900093
<b>19</b>	998099 - Main circuit flow switch - replaces code 573224 from serial number: 2320004900093
<b>22</b>	998921 - Microswitch - replaces code 573340 from serial number: 2320004900093
<b>24</b>	998072 - Return group - replaces code 573163 from serial number: 2320004900093
<b>44</b>	999504 - Control panel (front) - replaces code 997020 from serial number: 2320004900093
<b>54</b>	999329 - Control panel - replaces code 997204 from serial number: 2320004900093
<b>56</b>	999255 - Cable (earth) - not listed on original drawing
<b>58</b>	998915 - Cable (low voltage) - replaces code 998048 from serial number: 2320004900093
<b>59</b>	998807 - Fan - replaces code 572989 from serial number: 2320004900093
<b>72</b>	998108 - Cable clamp - not listed on original drawing
<b>78</b>	998075 - Sight glass - replaces code 573567 from serial number: 2320004900093
<b>79</b>	998076 - Gasket (sight glass) - replaces code 569442 from serial number: 2320004900093
<b>80</b>	998130 - Insulation panel (rear) - replaces code 573724 from serial number: 2320004900093
<b>80</b>	998132 - Insulation panel (rear) - replaces code 573727 from serial number: 2320004900093
<b>82</b>	998128 - Insulation panel (side) - replaces code 573720 from serial number: 2320004900093
<b>87</b>	998064 - Spring (by-pass pipe) - replaces code 573808 from serial number: 2320004900093
<b>89</b>	998065 - By-pass pipe - replaces code 573245 from serial number: 2320004900093
<b>95</b>	999524 - Pipe (safety valve) - replaces code 998019 from serial number: 2320004900093
<b>97</b>	999089 - Gas valve (SIT 845 Sigma) - replaces code 570733 from serial number: 2320004900093
<b>100</b>	574194 - Pipe (gas valve/burner) - replaces code 573289 from serial number: 2320004900093
<b>107</b>	999166 - Spark generator - replaces code 573023 from serial number: 2320004900093
<b>119</b>	998138 - Main exchanger - replaces code 572749 from serial number: 2320004900093
<b>119</b>	998139 - Main exchanger - replaces code 572835 from serial number: 2320004900093
<b>122</b>	998129 - Insulation panel (front) - replaces code 573721 from serial number: 2320004900093
<b>122</b>	998131 - Insulation panel (front) - replaces code 573722 from serial number: 2320004900093
<b>123</b>	998103 - Flue hood - replaces code 573249 from serial number: 2320004900093
<b>124</b>	999119 - Cable (P.C.B./fan/air pressure sw.) - not listed on original drawing
<b>125</b>	998106 - Cable (fan/air pressure) - replaces code 573017 from serial number: 2320004900093
<b>303</b>	999571 - Case panel (front) - replaces code 999437 from serial number: 2320004900093
<b>304</b>	998066 - Bottom cover - replaces code 997169 from serial number: 2320004900093