



SPARE PARTS EXPLODED VIEW
WALL-HUNG GAS BOILERS

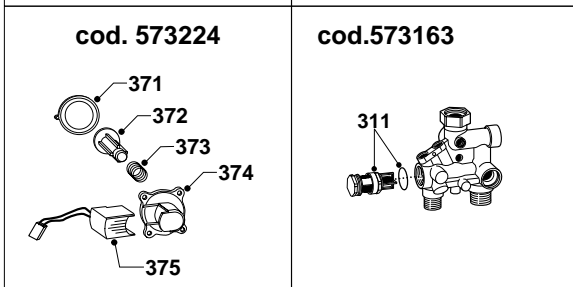
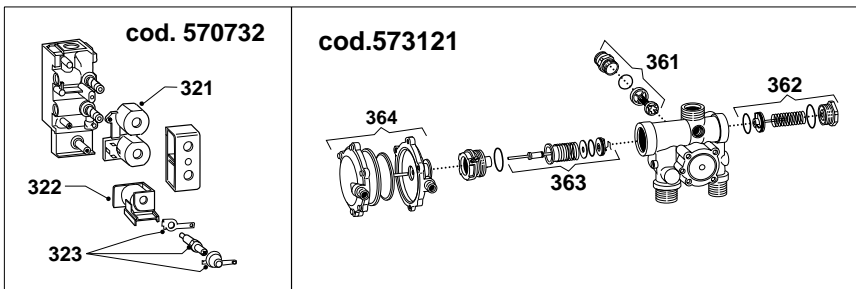
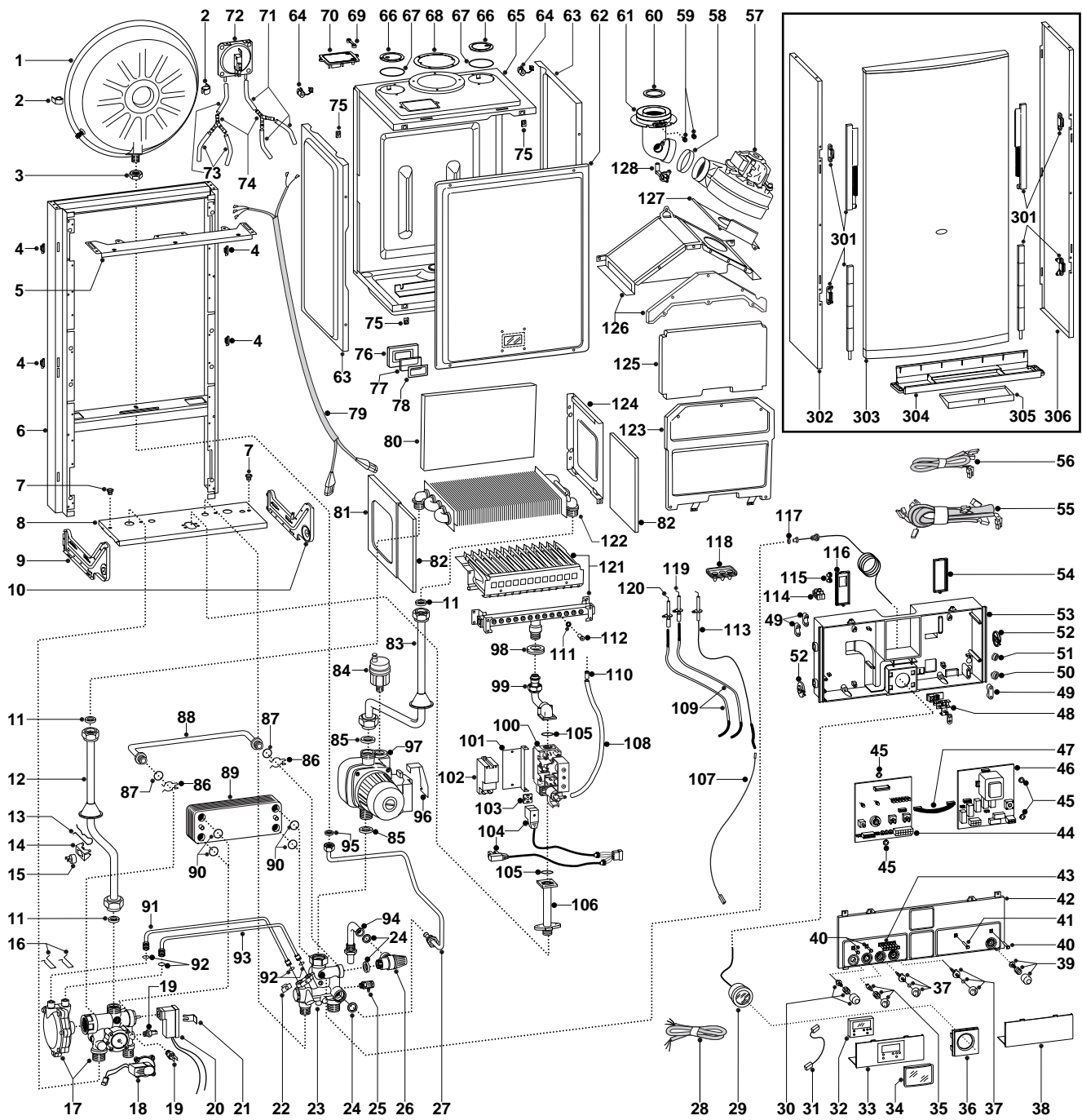
Model

GENUS 30 MFFI UK

Edition 1

Current from Serial No:- 2319909000837 to 2320015700001





MODELS	CHARACTERISTICS	SERIAL NO: VALIDITY	REF.
GENUS 30 MFFI	METHANE	9909000837	A
GENUS 30 MFFI	LPG	9908200225	B

PART	CODE	DESCRIPTION	REF.	NOTE
1	573294	Expansion vessel		
2	573310	Expansion vessel insert		
3	573244	3/8" lock nut		
4	574302	Casing support bracket (plastic)		
5	572984	Casing support bracket		
6		Frame		11
7	570772	Cable holder		
8		Hydraulic support		11
9	574292	Hydraulic support bracket (L.H.)		
10	574291	Hydraulic support bracket (R.H.)		
11	573520	Gasket 3/4"		
12	997200	Pipe (Main exchanger/3-way-group)		
13	998043	Thermostat fixing spring		
14	997224	Overheat thermostat fixing spring		
15	997206	Overheat thermostat		
16	573809	Spring (water venturi)		
17	573121	3-way/main flow group		
18	573224	Main flow Group		
19	569236	Temp probe (C.H.W.)		
20	573340	Microswitch for 3-way/main flow group		
21	573824	Microswitch bracket (main flow)		
22	571838	Pipe fixing clip		
23	573163	Return group		
24	573528	Gasket 1/2"		
25	573727	Manual vent cock		
26	573172	Safety valve 3 bar 1/2"		
27	573311	Pipe (expansion vessel)		
28	998012	Main power supply cable		
29	571649	Pressure gauge		
30	573300	Release push-button kit		
31	997180	Time clock connection cable		
32	997208	Time clock		
33	997205	Cover with time clock insert		
34	997142	Cover (time clock protection)		
35	573302	Summer/Winter selector Kit		
36	572948	Pressure gauge cover		
37	573301	Regulation knob kit		
38	571628	Inspection cover (R.H.)		
39	573303	On-Off push-button kit		
40	571550	Power indicator L.E.D. lens		
41	572659	Flue L.E.D. cover (white)		
42	997020	Control panel (front)		
43	571551	Temperature L.E.D. bank lens		
44	953045	P.C.B. E C-MI/FFI		
45	569711	Nylon bush 10mm		
46	952981	P.C.B. EI A-MFFI		
47	952610	P.C.B. cable		
48		Terminal board		11
49	571562	Cable clamp		
50	569458	Cable holders silicone D.2		
51	573534	Cable holder D.75		
52	571558	Control panel rotor		
53	997204	Control panel		
54	569713	Cable holder cover (R.H.)		
55	574272	High voltage wiring		
56	998048	Low voltage wiring		
57	572990	Fan		
58	573343	Fan inlet gasket		
59	573326	Flue intake plug		
60	998113	Membrane D.14		
61	573333	Flue exhaust manifold / header		
62	573344	Sealed chamber front panel		
63	573247	Sealed chamber side panel		
64	570561	Fan power supply cord clamp		
65		Sealed chamber box-shaped casing		11

PART	CODE	DESCRIPTION	REF.	NOTE
66	573330	Air return cover		
67	573865	Flue manifold gasket		
68	573337	Flue manifold gasket		
69	573329	Pressure gauge pressure intake cover		
70	997203	Air pressure switch support plate		
71	571575	Silicone pipe (positive signal)		
72	571652	Air pressure switch		
73	569662	Silicone pipe		
74	573327	Y-piece (air pressure)		
75	570717	Fastening spring		
76	573566	View window holder		
77	573567	View window glass		
78	569442	View window seal		
79	573017	Cable (fan/air pressure switch)		
80	573724	Back insulation panel		
81	573243	Combustion chamber panel (L.H.)		
82	573720	Side insulation panel		
82	572906	Pipe (main exchanger/pump)		
83	573313	Pipe (main exchanger/pump)		
84	564254	Automatic air release valve		
85	569387	Gasket 1"		
86	573808	By-pass pipe spring		
87	571449	O-ring		
88	573245	By-pass pipe		
89	573295	Secondary exchanger (plate-type) exchanger 27kW		
90	573825	O-ring (secondary exchanger)		
91	573086	Pipe (main flow switch positive signal)		
92	571807	O-ring (20-18)		
93	573087	Pipe (main flow switch negative signal)		
94	998019	Safety valve outlet pipe		
95	573521	Gasket 3/8"		
96	997146	Pump connector bracket		
97	997151	Pump		
98	569443	Silicone seal		
99	573289	Pipe (Gas valve to burner)		
100	570732	Gas valve (SIT tandem)		
101	573285	Spark generator support		
102	573023	Spark generator		
103	573022	Clamp		
104	998035	High voltage cable		
105	571965	O-ring (13)		
106	997202	Pipe (gas inlet)		
107	571657	Cable (detection electrode/P.C.B.)		
108	573576	Compensation tube		
109	571662	Ignition electrode cable		
110	573325	Rivet		
111	572138	Burner jet washer		
112	998433	Burner jet 1.30mm	A	
112	998434	Burner jet 0.77mm	B	
113	573441	Detection electrode		
114	571787	Terminal board		
115	569720	Blind grommet		
116	569714	Cable holder cover (L.H.)		
117	569390	Gasket 1/4"		
118	573336	Ignition electrode cable rubber		
119	569560	Ignition electrode (R.H.)		
120	569561	Ignition electrode (L.H.)		
121	998110	Main burner	A	
121	998111	Main burner	B	
122	572835	Main exchanger		
123	572648	Combustion chamber front		
124	573242	Combustion chamber panel (R.H.)		
125	573722	Front insulation panel		
126	573249	Sealed chamber flue hood		

PART	CODE	DESCRIPTION	REF.	NOTE
127	573465	Fan fixing plate		
128	573314	Venturi (exhaust manifold/header)		
301	571993	Front panel runner kit		
302	573012	Casing panel (L.H.)		
303	997226	Casing panel (front)		
304	997169	Bottom cover		
305	997166	Warning plate lid		
306	573011	Casing panel (R.H.)		
311	571444	D.H.W. actuator kit		
321	570712	SIT Tandem gas valve operator coils		
322	573740	SIT Tandem modureg coil		
323	573745	Gas modulator cartridge		
361	571443	Heating by-pass kit		
362	571442	D.H.W. pressure switch kit		
363	571447	3-way spring kit		
364	571446	D.H.W. diaphragm valve		
371	571547	Main flow switch diaphragm		
372	571772	Main flow switch magnet		
373	571771	Main flow switch spring		
374	571770	Main flow switch top cap		
375	573138	Main flow switch reed system		
381	998152	Burner jet 1.30 full kit (Natural gas)		12
382	998432	Burner jet 0.77 full kit (LPG)		12