



SPARE PARTS EXPLODED VIEW
GAS WALL BOILER

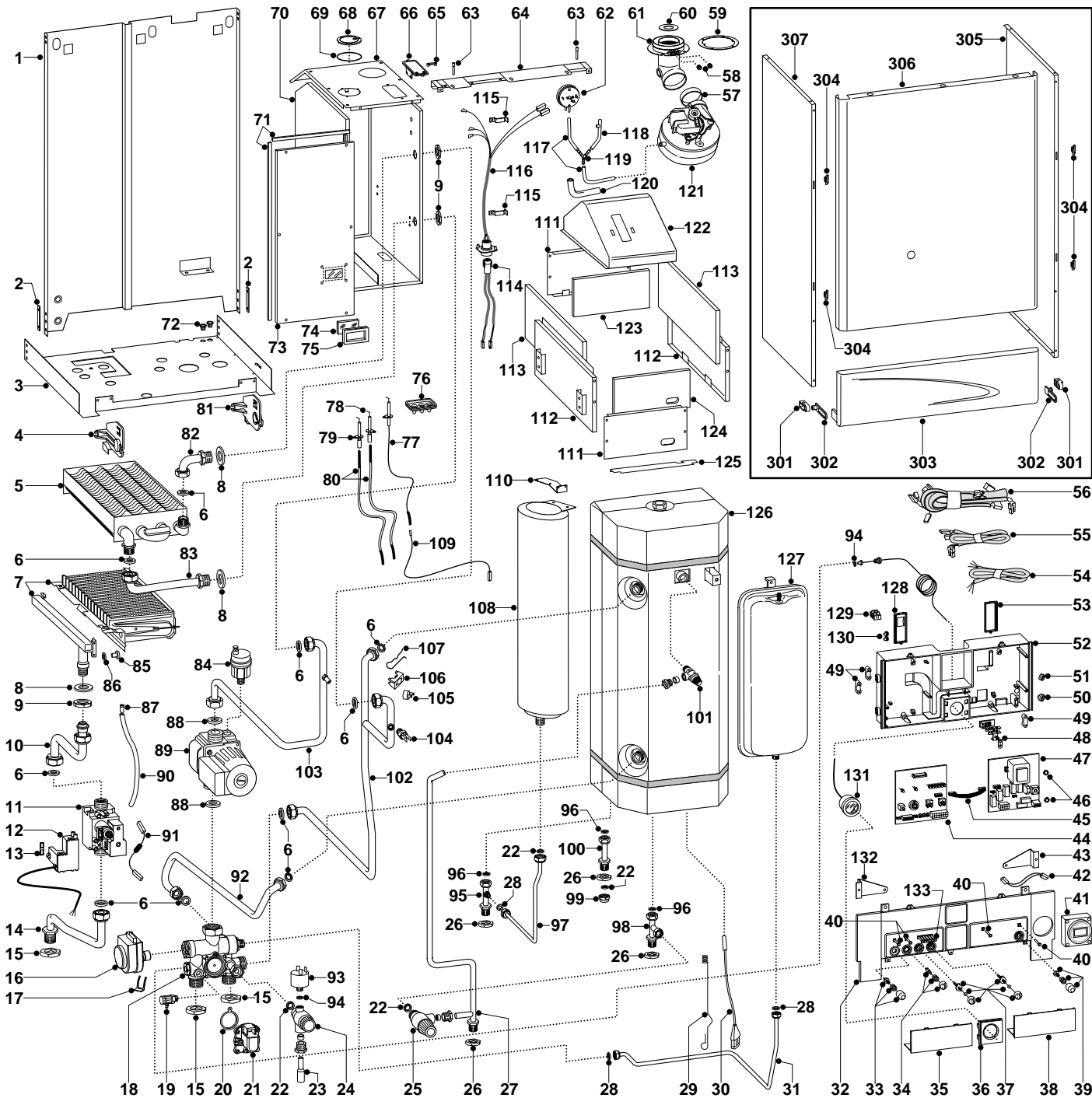
Model

GENUS 27 BFFI PLUS

Edition 3

Current from Serial No:- 2320102500001 to -----





ER2001210020003001

MODEL	CHARACTERISTICS	SERIAL NO: VALIDITY	REF.
GENUS 27 BFFI PLUS	METHANE	2320102500001	A
GENUS 27 BFFI PLUS	LPG	2320102500001	B

PART.	CODE	DESCRIPTION	REF.	NOTE
1	-----	Frame		11
2	-----	Frame spacer		11
3	-----	Hydraulic group support		11
4	999164	Control panel bracket holder (L.H.)		
5	573435	Main exchanger		
6	573520	Gasket 3/4"		
7	572625	Burner 15 ramp (natural gas)	A	
7	572626	Burner 15 ramp (LPG)	B	
8	569413	Gasket 37x26x2		
9	569446	Lock Nut (Brass) 3/4"		
10	998701	Pipe (gas valve/burner)		
11	997089	Gas valve (SIT 845 SIGMA)		
12	999166	Spark generator		
13	574279	Gasket		
14	998890	Pipe (gas inlet)		
15	573523	Lock nut 3/4"		
16	997147	Motor (3-Way valve)		
17	997077	Fixing clip (motor)		
18	998799	Hydraulic group		
19	573727	Drain valve		
20	571547	Diaphragm (main flow switch)		
21	998099	Main circuit flow switch		
22	573528	Gasket 1/2"		
23	573190	Drainage pipe		
24	569292	Safety valve (3 bar)		
25	573139	Expansion relief valve 6 bar		
26	573530	Lock nut 1/2"		
27	995332	Pipe (cylinder discharge)		
28	573521	Gasket 3/8"		
29	570542	Spring (D.H.W. probe)		
30	573015	Temperature probe (D.H.W.)		
31	998922	Pipe (C.H. pressure vessel)		
32	999472	Control panel (front)		
33	571982	Reset Button		
34	571983	Summer/winter selector kit		
35	571627	Inspection cover (L.H.)		
36	571622	Pressure gauge cover		
37	571984	Control knob kit		
38	571623	Inspection Cover (R.H.)		
39	998015	Push button kit		
40	571550	Power Indicator L.E.D. lens		
41	569538	Time clock (digital)		
42	573101	Cable (time clock)		
43	999202	Control panel holder (R.H.)		
44	953082	Printed circuit board (low voltage)		
45	952610	Cable (P.C.B.)		
46	569711	Nylon bush (10mm)		
47	952935	Printed circuit board (high voltage)		
48	-----	Terminal board		11
49	571562	Cable clamp		
50	569458	Cable holders silicone D.2		
51	573534	Cable holder D.75		
52	999386	Control panel		
53	571967	Cable cover (R.H.)		
54	998012	Cable (power supply)		
55	999427	Low voltage wiring		
56	999300	High voltage wiring		
57	573343	Gasket (fan inlet)		
58	573326	Flue intake plug		
59	573337	Gasket (flue manifold)		
60	995352	Restrictor (flue - exhaust manifold/header)		
61	999682	Flue exhaust manifold		
62	998484	Air pressure switch		
63	998426	Pivot		
64	999176	Casing support bracket		

ER2001210020003001

PART.	CODE	DESCRIPTION	REF.	NOTE
65	573329	Pressure intake cover		
66	997203	Support plate (air pressure switch)		
67	999065	Cover (sealed chamber)		
68	573330	Air return cover		
69	573865	Flue gasket		
70	-----	Sealed chamber		11
71	998516	Gasket (adhesive 10x6)		
72	570772	Cable holder		
73	998392	Panel (front - sealed chamber)		
74	998075	Sight glass		
75	998076	Gasket (sight glass)		
76	998147	Ignition electrode cable rubber		
77	573441	Electrode (Detection)		
78	569560	Electrode (Ignition R.H.)		
79	569561	Electrode (Ignition L.H.)		
80	998724	Ignition electrode cable		
81	999163	Control panel bracket holder (R.H.)		
82	570584	Pipe (return - main exchanger)		
83	570585	Pipe (flow - main exchanger)		
84	564254	Auto air vent		
85	570248	Burner jet (NG 1.25)	A	
85	570251	Burner jet (LPG 0.72)	B	
86	572138	Burner jet washer		
87	573325	Rivet		
88	569387	Gasket 1"		
89	999434	Pump		
90	573576	Compensation tube		
91	998008	Cable (resistive)		
92	998526	Pipe (return cylinder)		
93	998627	Low water pressure switch		
94	569390	Gasket 1/4"		
95	999412	Pipe (D.H.W. cylinder - outlet)		
96	999408	Gasket 1/2"		
97	999413	Pipe (D.H.W. pressure vessel)		
98	995350	Pipe (cold water inlet)		
99	570571	1/2" brass cap		
100	995331	Pipe (secondary return)		
101	573140	Temperature/pressure relief valve (7 bar)		
102	998910	Pipe (flow - cylinder)		
103	999431	Pipe (pump to main heat exchanger)		
104	998458	Temperature probe		
105	997206	Thermostat (overheat)		
106	997224	Mounting bracket (overheat thermostat)		
107	998043	Fixing spring (overheat thermostat)		
108	999403	Expansion vessel (D.H.W.)		
109	571657	Cable (detection electrode/P.C.B.)		
110	999419	Support bracket (D.H.W. vessel)		
111	570553	Panel (combustion chamber - front)		
112	999161	Panel (combustion chamber - side)		
113	998136	Panel (insulation - side)		
114	999178	Cable (fan/P.C.B.)		
115	998108	Cable clamp		
116	998725	Cable (fan/air pressure switch)		
117	569662	Silicone pipe		
118	571819	Silicone pipe (negative signal)		
119	573327	"Y" piece (air pressure)		
120	-----	Pipe-joint		11
121	998806	Fan		
122	998891	Flue hood		
123	998148	Insulation panel (rear)		
124	998133	Insulation panel (front)		
125	573113	Air diffuser		
126	999607	D.H.W. cylinder		
127	573456	Expansion vessel (C.H.)		
128	571968	Cable cover (L.H.)		

PART.	CODE	DESCRIPTION	REF.	NOTE
129	573091	Terminal board (three pole)		
130	569720	Blind grommet		
131	571649	Pressure gauge		
132	999203	Control panel holder (L.H.)		
133	571551	Temperature L.E.D. lens bank		
301	573360	Hinge		
302	998009	Hinge arm		
303	999948	Control panel cover		
304	574302	Casing support bracket (Plastic)		
305	999169	Case panel (R.H. side)		
306	999114	Panel (front case)		
307	999170	Case panel (L.H. side)		
311	569281	Burner jet 1.25mm full kit (NG)		12
312	569282	Burner jet 0.72 full kit (LPG)		12

NOTE	DESCRIPTION
11	Not supplied as a spare part
12	Not illustrated

PART.	NOTIFICATION OF CHANGES	
	Spares listed below are not interchangeable with those in Ed.1 or Ed.2	
27	995332 - Pipe (cylinder discharge)	- replaces code 999430 from serial number: 2320102500001
52	999386 - Control panel (front)	- not listed on original drawing
60	995352 - Restrictor (exhaust)	- replaces code 574291 from serial number: 2320004900093
126	999607 - D.H.W. Cylinder	- replaces code 573127 from serial number: 2320102500001