



SPARE PARTS EXPLODED VIEW
WALL-HUNG GAS BOILERS

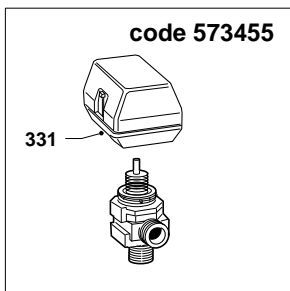
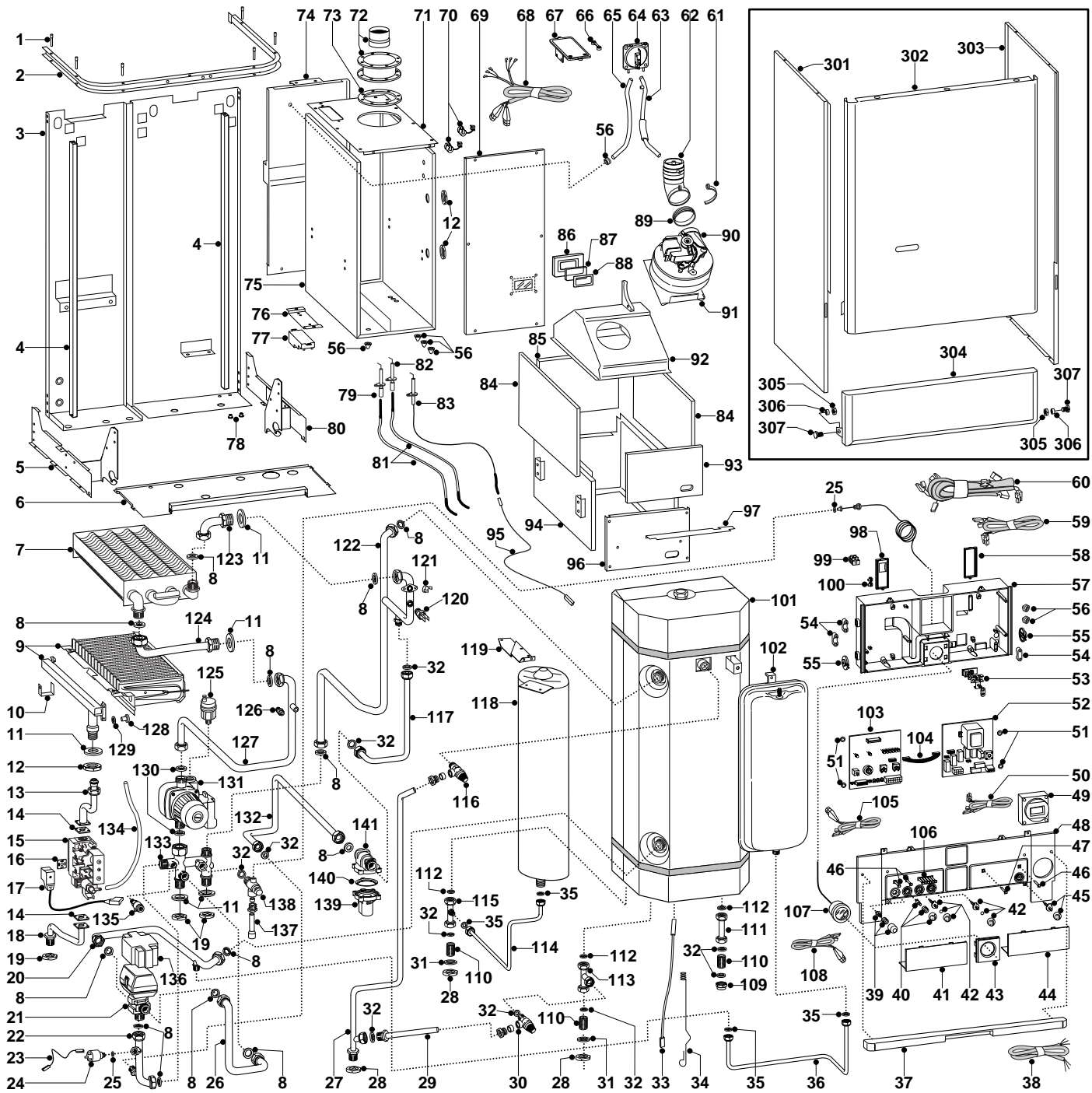
Models

GENUS 27 BFFI UK

Edition 3

Current from Serial No:- 2320020100002 to -----





MODELS	CHARACTERISTICS	SERIAL NO. VALIDITY	REF.
GENUS 27 BFFI UK	METANO	2320020100002	A
GENUS 27 BFFI UK	GPL	2320020100002	B

ER2001210106203011

PART.	CODE	DESCRIPTION	REF.	NOTE
1	570603	Pivot (casing panel)		
2	997104	Case panels support arc		
3	-----	Frame		11
4	573106	Case panel support (L/H + R/H)		
5	573117	Control panel bracket holder (L/H)		
6	573185	Cover plate (underside)		
7	573435	Main exchanger		
8	573520	Gasket 3/4"		
9	572625	Burner 15 ramp (natural gas)	A	
9	572626	Burner 15 ramp (LPG)	B	
10	573124	Burner support		
11	569413	Gasket 37x26x2		
12	569446	Lock Nut (Brass) 3/4"		
13	572738	Pipe (gas valve/burner)		
14	569254	Gasket (gas valve)		
15	570732	Gas valve (sit tandem)		
16	573022	Clamp		
17	999177	Gas valve cable		
18	573057	Pipe (gas inlet)		
19	573523	Lock nut 3/4"		
20	570581	Pipe (motorised valve to cylinder)		
21	573455	Motorized valve body		
22	573090	Pipe (motorised valve outlet)		
23	998461	Cable (pump pressure switch)		
24	570605	Pump pressure switch		
25	569390	Gasket 1/4"		
26	570576	Pipe (motorised valve inlet)		
27	997100	Pipe (cylinder discharge)		
28	573530	Lock nut 1/2"		
29	997101	Hose (expansion relief to discharge)		
30	573139	Expansion relief valve 6 bar		
31	569415	Gasket (30 x 22 x 2)		
32	573528	Gasket 1/2"		
33	573015	Temperature probe (D.H.W.)		
34	570542	Spring (D.H.W. probe)		
35	573521	Gasket 3/8"		
36	570587	Pipe (expansion vessel C.H.)		
37	-----	Ball catch housing		11
38	998012	Cable (power supply)		
39	571982	Reset Button		
40	571983	Summer/winter selector kit		
41	571627	Inspection cover (L.H.)		
42	571984	Control knob kit		
43	572384	Surround (Pressure Guage)		
44	571623	Inspection Cover (R.H.)		
45	571985	On/off knob		
46	571550	Power Indicator L.E.D. lens		
47	572658	Flue L.E.D. cover (green)		
48	995402	Control panel (front)		21
49	569538	Time clock (digital)		
50	573101	Cable (time clock)		
51	569711	Nylon bush (10mm)		
52	952930	Printed circuit board (high voltage)		
53	-----	Terminal board		11
54	571562	Cable clamp		
55	571558	Control panel rotor		
56	569458	Cable holders silicone D.2		
57	-----	Control panel		11
58	571967	Cable cover (R.H.)		
59	998181	Low voltage wiring		
60	573195	Cable (motorised valve/pump/gas valve)		
61	569434	Collar (Venturi)		
62	572382	Venturi		
63	571819	Silicone pipe (negative signal)		
64	571652	Air pressure switch		

PART.	CODE	DESCRIPTION	REF.	NOTE
65	571575	Silicone pipe (positive signal)		
66	573329	Pressure intake cover		
67	997203	Support plate (air pressure switch)		
68	573193	Cable (fan/air pressure switch)		
69	573114	Panel (front - sealed chamber)		
70	570561	Clamp (fan supply cord)		
71	573103	Cover (sealed chamber)		
72	571166	Flue (coaxial turret)		
73	573447	Gasket (Neoprene 95x128mm)		
74	572856	Panel (sealed chamber - rear)		
75	-----	Sealed chamber		11
76	573493	Spark generator support bracket		
77	573023	Spark generator		
78	570772	Cable holder		
79	569561	Electrode (Ignition L.H.)		
80	573118	Control panel bracket holder (R/H)		
81	573440	Cable (ignition electrode)		
82	569560	Electrode (Ignition R.H.)		
83	573441	Electrode (Detection)		
84	998136	Panel (insulation - side)		
85	998148	Insulation panel (rear)		
86	573566	View window holder		
87	573567	View window glass		
88	569442	View window seal		
89	573446	Fan seal (silicone)		
90	573434	Fan		
91	573049	Support plate (fan)		
92	570516	Flue hood		
93	998133	Insulation panel (front)		
94	570515	Combustion chamber		
95	571657	Cable (detection electrode/P.C.B.)		
96	570553	Panel (combustion chamber front)		
97	573113	Air diffuser		
98	571968	Cable cover (L.H.)		
99	573091	Terminal board (three pole)		
100	569720	Blind grommet		
101	999607	D.H.W. cylinder 50 L		
102	573456	Expansion vessel (C.H.)		
103	953082	Printed circuit board (low voltage)		
104	952610	Cable (P.C.B.)		
105	572998	Cable (Air pressure switch/P.C.B.)		
106	571551	Temperature L.E.D. lens bank		
107	571649	Pressure gauge		
108	573192	Cable (fan/P.C.B.)		
109	570571	1/2" brass cap		
110	573531	Nipple (1/2" brass)		
111	573187	Pipe (secondary return)		
112	999408	Gasket 1/2"		
113	573496	Pipe (cold water inlet)		
114	997099	Pipe (D.H.W. expansion vessel)		
115	573115	Pipe (D.H.W. outlet)		
116	573140	Temperature/pressure relief valve (7 bar)		
117	572718	Pipe (main flow switch - positive)		
118	998122	Expansion vessel		
119	570959	Support bracket (D.H.W. vessel)		
120	998458	Temperature probe		
121	571648	Thermostat (overheat)		
122	572717	Pipe (main circuit)		
123	570584	Pipe (return - main exchanger)		
124	570585	Pipe (flow - main exchanger)		
125	564254	Auto air vent		
126	998564	Air valve fitting		
127	572716	Pipe (pump to main heat exchanger)		
128	570248	Burner jet (NG 1.25)	A	
128	570251	Burner jet (LPG 0.72)	B	

ER2001210106203011

PART.	CODE	DESCRIPTION	REF.	NOTE
129	572138	Burner jet washer		
130	569387	Gasket 1"		
131	573123	Pump		
132	572719	Pipe (main flow switch - negative)		
133	572715	Hydraulic group		
134	573576	Compensation tube		
135	573727	Drain valve		
136	572858	Cover (motorised valve)		
137	573190	Drainage pipe		
138	569292	Safety valve (3 bar)		
139	998099	Main circuit flow switch		
140	571547	Diaphragm (main flow switch)		
141	572728	By-bass body		
301	573141	Case panel (L.H. side)		
302	570599	Panel (front case)		
303	573142	Case panel (R.H. side)		
304	570557	Case door (control panel)		
305	573149	Lock nut M6		
306	573068	Bush		
307	573147	Bolt (M6x16)		
331	570711	Motor (3 way valve)		
361	569281	Burner jet 1.25mm full kit (NG)		12
362	569282	Burner jet 0.72 full kit (LPG)		12

NOTE	DESCRIPTION
11	Not supplied as a spare part
12	Not illustrated

PART.	NOTIFICATION OF CHANGES
	Spares listed below are not interchangeable with those in Ed.1
48	995402 - Control panel (front) - replaces code 573116 from serial number: 2320105600001
-----	291095 - Anode (flexible) - available as optional extra in place of 570439, use in conjunction with 230511
-----	230511 - Nut (flexible anode) - available as optional extra in place of 570439, use in conjunction with 291095