



SPARE PARTS EXPLODED VIEW
WALL-HUNG GAS BOILER

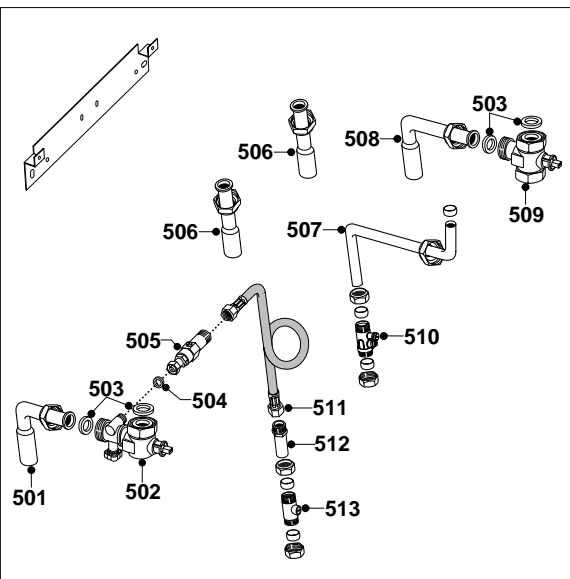
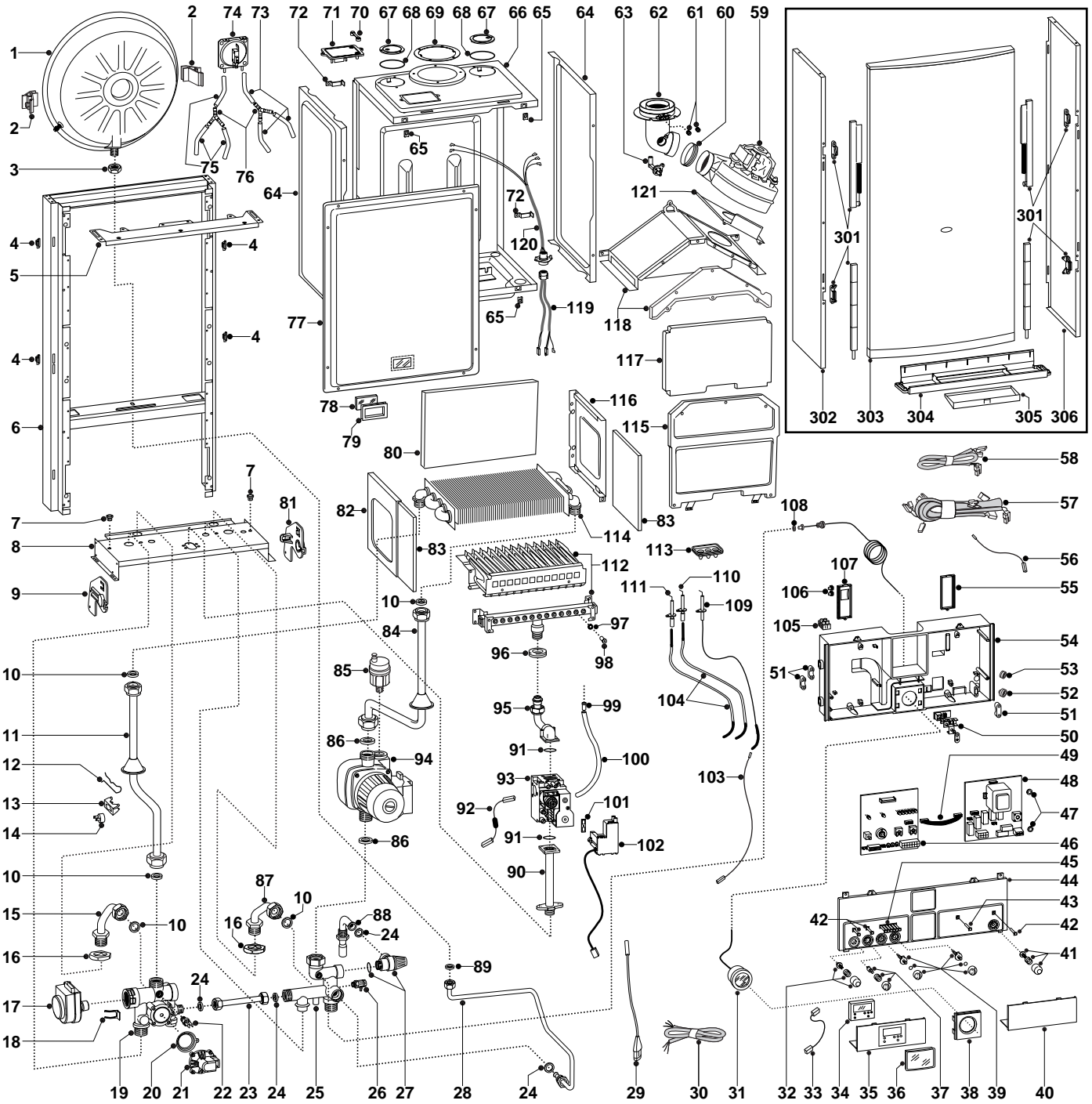
Model

GENUS 27 RFFI SYSTEM

Edition 3

Current from Serial No:- 2320007700003 to -----





MODELS	CHARACTERISTICS	SERIAL NO: VALIDITY	REF.
GENUS 27 RFFI TANK	METHANE	2320007700003	A
GENUS 27 RFFI TANK	LPG	2320007700003	B

ER2000211010403001

PART.	CODE	DESCRIPTION	REF.	NOTE
1	573294	Expansion vessel		
2	999679	Expansion vessel insert		
3	573244	3/8" lock nut		
4	574302	Casing support bracket (Plastic)		
5	572984	Casing support bracket		
6	-----	Frame		11
7	570772	Cable holder		
8	-----	Hydraulic group support		11
9	998042	Hydraulic support bracket (L.H.)		
10	573520	Gasket 3/4"		
11	997200	Pipe (main exchanger - 3 way group)		
12	998043	Mounting bracket (overheat thermostat)		
13	997224	Fixing spring (overheat thermostat)		
14	997206	Thermostat (overheat)		
15	573169	Pipe (cylinder flow)		
16	573523	Lock nut 3/4"		
17	997147	Motor (3-Way valve)		
18	997077	Fixing clip (motor)		
19	997148	Flow group		
20	571547	Diaphragm (main flow switch)		
21	998099	Main circuit flow switch		
22	998458	Temperature probe		
23	572911	By-pass pipe		
24	573528	Gasket 1/2"		
25	997828	Return group		
26	573727	Drain valve		
27	573172	Safety valve (1/2" 3 bar)		
28	573311	Pipe (expansion vessel)		
29	997274	Probe (D.H.W.)		
30	998012	Cable (power supply)		
31	571649	Pressure gauge		
32	573300	Push button kit		
33	997180	Cable (time clock)		
34	997208	Time clock		
35	997205	Inspection cover (L.H.)		
36	997142	Cover (time clock)		
37	573302	Summer/Winter selector kit		
38	572948	Cover (pressure gauge)		
39	573301	Regulation knob kit		
40	571628	Inspection Cover (R.H.)		
41	573303	On/off push button kit		
42	571550	Power Indicator L.E.D. lens		
43	572659	Flue L.E.D. cover (white)		
44	999507	Front panel cover		
45	571551	Temperature L.E.D. lens bank		
46	953082	Printed circuit board (low voltage)		
47	569711	Nylon bush (10mm)		
48	952935	Printed circuit board (high voltage)		
49	952610	Cable (P.C.B.)		
50	-----	Terminal board		11
51	571562	Cable clamp		
52	569458	Cable holders silicone D.2		
53	573534	Cable holder D.75		
54	-----	Control panel		11
55	569713	Cable holder cover (R.H.)		
56	999255	Cable (earth)		
57	997149	High voltage wiring		
58	998916	Low voltage wiring		
59	572990	Fan		
60	573343	Gasket (fan inlet)		
61	573326	Flue intake plug		
62	573333	Flue (exhaust manifold / header)		
63	573314	Venturi (exhaust / manifold header)		
64	573247	Panel (sealed chamber - side)		
65	570717	Spring (fastening)		

PART.	CODE	DESCRIPTION	REF.	NOTE
66	-----	Sealed chamber		11
67	573330	Air return cover		
68	573865	Flue gasket		
69	573337	Gasket (flue manifold)		
70	573329	Pressure intake cover		
71	997203	Support plate (air pressure switch)		
72	998108	Cable clamp		
73	569662	Silicone pipe		
74	571651	Air pressure switch		
75	571575	Silicone pipe (positive signal)		
76	573327	"Y" piece (air pressure)		
77	573344	Panel (sealed chamber - front)		
78	998075	Sight glass		
79	998076	Gasket (sight glass)		
80	998130	Panel (insulation - rear)		
81	998041	Hydraulic support bracket (R.H.)		
82	573243	Panel (combustion chamber - L.H.)		
83	998128	Panel (insulation - side)		
84	572906	Pipe (main exchanger - pump)		
85	564254	Auto air vent		
86	569387	Gasket 1"		
87	573175	Pipe (cylinder return)		
88	999524	Pipe (safety valve)		
89	573521	Gasket 3/8"		
90	997202	Pipe (gas inlet)		
91	571965	O-Ring (13)		
92	998008	Cable (resistive)		
93	999089	Gas valve (SIT 845 SIGMA)		
94	997151	Pump		
95	574194	Pipe (gas valve/burner)		
96	569443	Silicone seal		
97	572138	Burner jet washer		
98	570248	Burner jet (NG 1.25)	A	
98	570251	Burner jet (LPG 0.72)	B	
99	573325	Rivet		
100	573576	Compensation tube		
101	574279	Gasket		
102	999166	Spark generator		
103	571657	Cable (detection electrode/P.C.B.)		
104	571662	Cable (ignition electrode)		
105	571787	Terminal board (two pole)		
106	569720	Blind grommet		
107	569714	Cable holder cover (L.H.)		
108	569390	Gasket 1/4"		
109	573441	Electrode (Detection)		
110	569560	Electrode (Ignition R.H.)		
111	569561	Electrode (Ignition L.H.)		
112	572343	Burner 15 ramp (natural gas)	A	
112	572372	Burner 15 ramp (LPG)	B	
113	998147	Ignition electrode cable rubber		
114	998139	Main exchanger		
115	572648	Panel (combustion chamber - front)		
116	573242	Panel (combustion chamber - R.H.)		
117	998129	Panel (insulation - front)		
118	998103	Flue hood		
119	999119	Cable (P.C.B./fan/air pressure switch)		
120	998106	Cable (fan/air pressure switch)		
121	573465	Fixing plate (fan)		
301	571993	Runner kit (front panel)		
302	573012	Case panel (L.H. side)		
303	999571	Case panel (front)		
304	998066	Bottom cover		
305	997166	Warning plate lid		
306	573011	Case panel (R.H. side)		

PART.	CODE	DESCRIPTION	REF.	NOTE
501	998418	Pipe (C.H. flow - D=18)		
502	998407	Isolating valve 3/4" (C.H. flow)		
503	573520	Gasket 3/4"		
504	569390	Gasket 1/4"		
505	998080	Double check valve		
506	998379	Pipe (cylinder flow/return)		
507	997700	Pipe (gas inlet)		
508	998380	Pipe (C.H. return)		
509	999694	Isolating valve 3/4" (C.H. return)		
510	571000	Isolating valve (gas inlet)		
511	998427	Flexible pipe		
512	998746	Pipe 3/8" (C.W. inlet - d=15)		
513	570743	Isolating valve 1/2" (C.W. inlet - M-M d=15)		
601	569281	Burner jet 1.25mm full kit (NG)		12
602	569282	Burner jet 0.72 full kit (LPG)		12

NOTE	DESCRIPTION
11	Not supplied as a spare part
12	Not illustrated

PART.	NOTIFICATION OF CHANGES	
	Spares listed below are not interchangeable with those in Ed.2	
2	999679 - Expansion vessel insert	- replaces code 573310 from serial number: 2320007700003
9	998042 - Hydraulic support bracket (L/H)	- replaces code 574292 from serial number: 2320007700003
12	998043 - Mounting bracket (overheat stat)	- not listed on original drawing
21	998099 - Main circuit flow switch	- replaces code 573224 from serial number: 2320007700003
22	998458 - Temperature probe	- replaces code 569236 from serial number: 2320007700003
44	999507 - Front panel cover	- replaces code 573227 from serial number: 2320007700003
58	998916 - Low voltage wiring	- replaces code 998045 from serial number: 2320007700003
74	571651 - Air pressure switch	- replaces code 571652 from serial number: 2320007700003
81	998041 - Hydraulic support bracket (L.H.)	- replaces code 574291 from serial number: 2320007700003
83	998128 - Panel (insulation - side)	- replaces code 573720 from serial number: 2320007700003
88	999524 - Pipe (safety valve)	- replaces code 998019 from serial number: 2320007700003
92	998008 - Cable (resistive)	- not listed on original
95	574194 - Pipe (gas valve/burner)	- replaces code 573289 from serial number: 2320007700003
102	999166 - Spark generator	- replaces code 573023 from serial number: 2320007700003
117	998129 - Panel (insulation - front)	- replaces code 573722 from serial number: 2320007700003
119	999119 - Cable (P.C.B./fan/air pressure sw.)	- replaces code 573017 from serial number: 2320007700003
120	998106 - Cable (fan/air pressure switch)	- replaces code 573017 from serial number: 2320007700003
303	999571 - Case panel (front)	- replaces code 997226 from serial number: 2320007700003