



SPARE PARTS EXPLODED VIEW  
WALL-HUNG GAS BOILERS

Models

**microGENUS 23 MFFI**

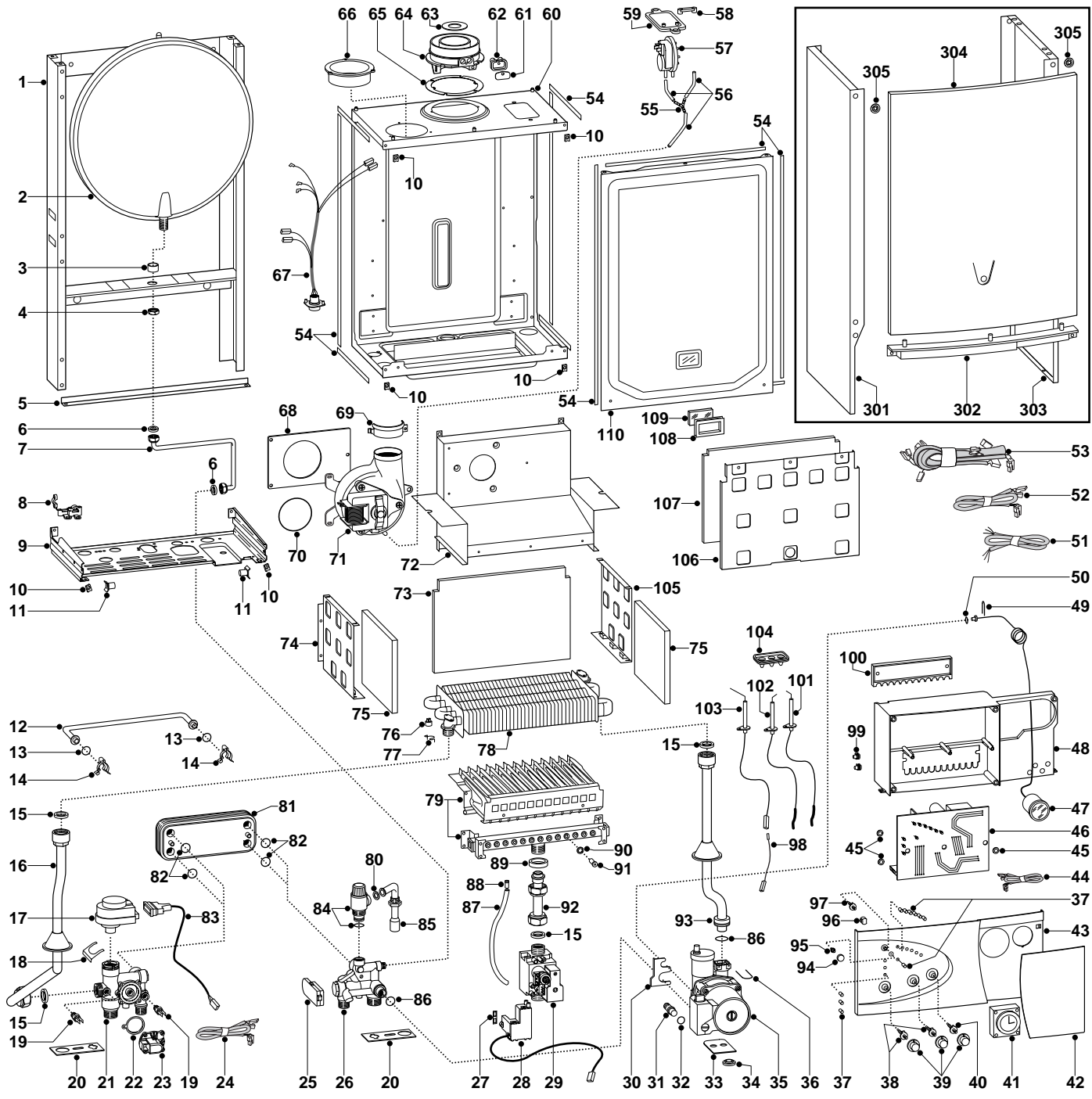
**microGENUS 27 MFFI**

---

Edition 3

Current from Serial No:- 2320021400002 to -----





MODELS	CHARACTERISTICS	SERIAL NO: VALIDITY	REF.
MICROGENUS 23 MFFI	METHANE	2320021400002	A
MICROGENUS 23 MFFI	LPG	2320021400002	B
MICROGENUS 27 MFFI	METHANE	2320021400002	C
MICROGENUS 27 MFFI	LPG	2320021400002	D

ER2000211017003001

PART.	CODE	DESCRIPTION	REF.	NOTE
1	-----	Frame		11
2	998616	Expansion vessel		
3	998776	Bush		
4	998581	3/8" lock nut		
5	999594	Frame support		
6	573521	Gasket 3/8"		
7	999102	Pipe (expansion vessel)		
8	998580	Cable holder		
9	-----	Hydraulic group support		11
10	570717	Spring (fastening)		
11	998569	Pivot		
12	998589	By-pass pipe		
13	998077	O-ring gasket		
14	998064	Spring (by-pass pipe)		
15	573520	Gasket 3/4"		
16	999978	Pipe (C.H. flow)		
17	997147	Motor (3-Way valve)		
18	997077	Fixing clip (motor)		
19	998458	Temperature probe		
20	999601	Gasket (anti-vibration)		
21	998613	Flow group		
22	571547	Diaphragm (main flow switch)		
23	998099	Main circuit flow switch		
24	998632	Cable (temperature probes)		
25	999075	D.H.W. flow switch		
26	999673	Return group		
27	574279	Gasket		
28	998645	Spark generator		
29	997089	Gas valve (SIT 845 SIGMA)		
30	999162	Pump bracket		
31	999598	Pump plug		
32	997182	Gasket		
33	999602	Spacer plate (pump)		
34	999100	Lock washer		
35	998836	Pump	AB	
35	999091	Pump	CD	
36	997153	U-clip		
37	998570	L.E.D.		
38	998575	Spindle (temperature knob)		
39	998603	Control knob		
40	998572	Spindle (on/off knob)		
41	999599	Time clock (mechanical)		
42	999059	Front cover		
43	999715	Control panel		
44	999721	Clock cable		
45	569711	Nylon bush (10mm)		
46	998947	Printed circuit board (CMP1-FFI)		
47	999245	Pressure gauge		
48	-----	Control panel		11
49	571548	Clip (main flow switch)		
50	998517	Gasket		
51	999521	Cable (power supply)		
52	998863	Low voltage wiring		
53	999153	High voltage wiring		
54	998516	Gasket (adhesive 10x6)		
55	573327	"Y" piece (air pressure)		
56	571575	Silicone pipe (positive signal)		
57	571651	Air pressure switch	CD	
57	998484	Air pressure switch	AB	
58	573329	Pressure intake cover		
59	997203	Support plate (air pressure switch)		
60	-----	Sealed chamber		11
61	998565	Cover (flue test point)		
62	998636	Gasket (flue test point)		
63	999980	Restrictor (flue - exhaust manifold/header)		

ER2000211017003001

<b>PART.</b>	<b>CODE</b>	<b>DESCRIPTION</b>	<b>REF.</b>	<b>NOTE</b>
64	999561	Flue (exhaust manifold/header)		
65	998637	Gasket (flue collar)		
66	998595	Plug (air intake)		
67	998648	Cable (fan/air pressure switch)		
68	999135	Panel (insulation - fan)	AB	
69	998566	Fixing clamp (fan)		
70	998943	O-ring (2.65x10.27)	CD	
71	998894	Fan	CD	
71	999397	Fan	AB	
72	998925	Flue hood	CD	
72	999385	Flue hood	AB	
73	998640	Panel (insulation - rear)	AB	
73	999554	Panel (insulation - rear)	CD	
74	998600	Panel (combustion chamber - L/H side)	AB	
74	998964	Panel (combustion chamber - L/H side)	CD	
75	998639	Panel (insulation - side)		
76	997206	Thermostat (overheat)		
77	998583	Fixing spring (overheat thermostat)		
78	998620	Main exchanger	AB	
78	998893	Main exchanger	CD	
79	998618	Burner 12 ramp (natural gas)	A	
79	998669	Burner 12 ramp (L.P.G.)	B	
79	998887	Burner 14 ramp (natural gas)	C	
79	998939	Burner 14 ramp (L.P.G.)	D	
80	573528	Gasket 1/2"		
81	571646	Secondary exchanger (p-type 23kW)	AB	
81	573295	Secondary exchanger (p-type 27kW)	CD	
82	573825	O-Ring (secondary exchanger)		
83	998629	Cable (3-way valve motor)		
84	573172	Safety valve (1/2" 3 bar)		
85	999524	Pipe (safety valve)		
86	998424	O-ring		
87	573576	Compensation tube		
88	573325	Rivet		
89	569443	Silicone seal		
90	572138	Burner jet washer		
91	998433	Burner jet (N.G. 1.30)	AC	
91	998434	Burner jet (L.P.G. 0.77)	BD	
92	998729	Pipe (gas valve)		
93	998732	Pipe (C.H. return)		
94	998604	Reset button		
95	998571	Reset button (insert)		
96	999148	Selector button (comfort)		
97	998579	Spindle (comfort)		
98	998862	Cable (detection electrode)		
99	569720	Blind grommet		
100	998953	Cable holder cover		
101	998623	Electrode (Ignition R.H.)		
102	998622	Electrode (Ignition L.H.)		
103	998624	Detection electrode		
104	998147	Ignition electrode cable rubber		
105	998599	Panel (combustion chamber - R.H.side)	AB	
105	998963	Panel (combustion chamber - R.H.side)	CD	
106	998598	Panel (combustion chamber front)	AB	
106	999586	Panel (combustion chamber front)	CD	
107	998638	Panel (insulation - front)	AB	
107	998895	Panel (insulation - front)	CD	
108	998076	Gasket (sight glass)		
109	998075	Sight glass		
110	999151	Panel (combustion chamber - front)		
301	998477	Case panel (L.H. side)		
302	998596	Insert case		
303	998476	Case panel (R.H. side)		
304	998607	Panel (front case)		

ER2000211017003001

