



SPARE PARTS EXPLODED VIEW
WALL-HUNG GAS BOILER

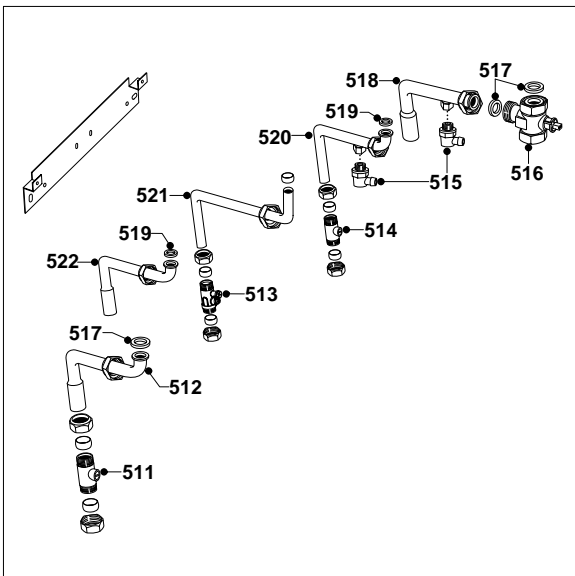
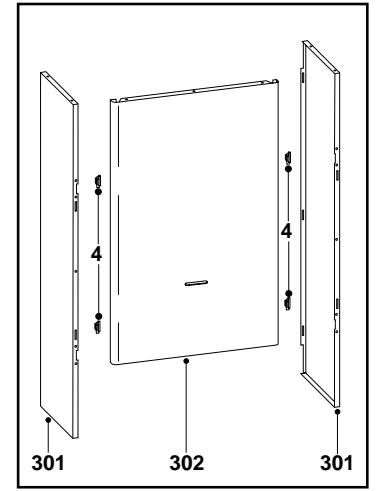
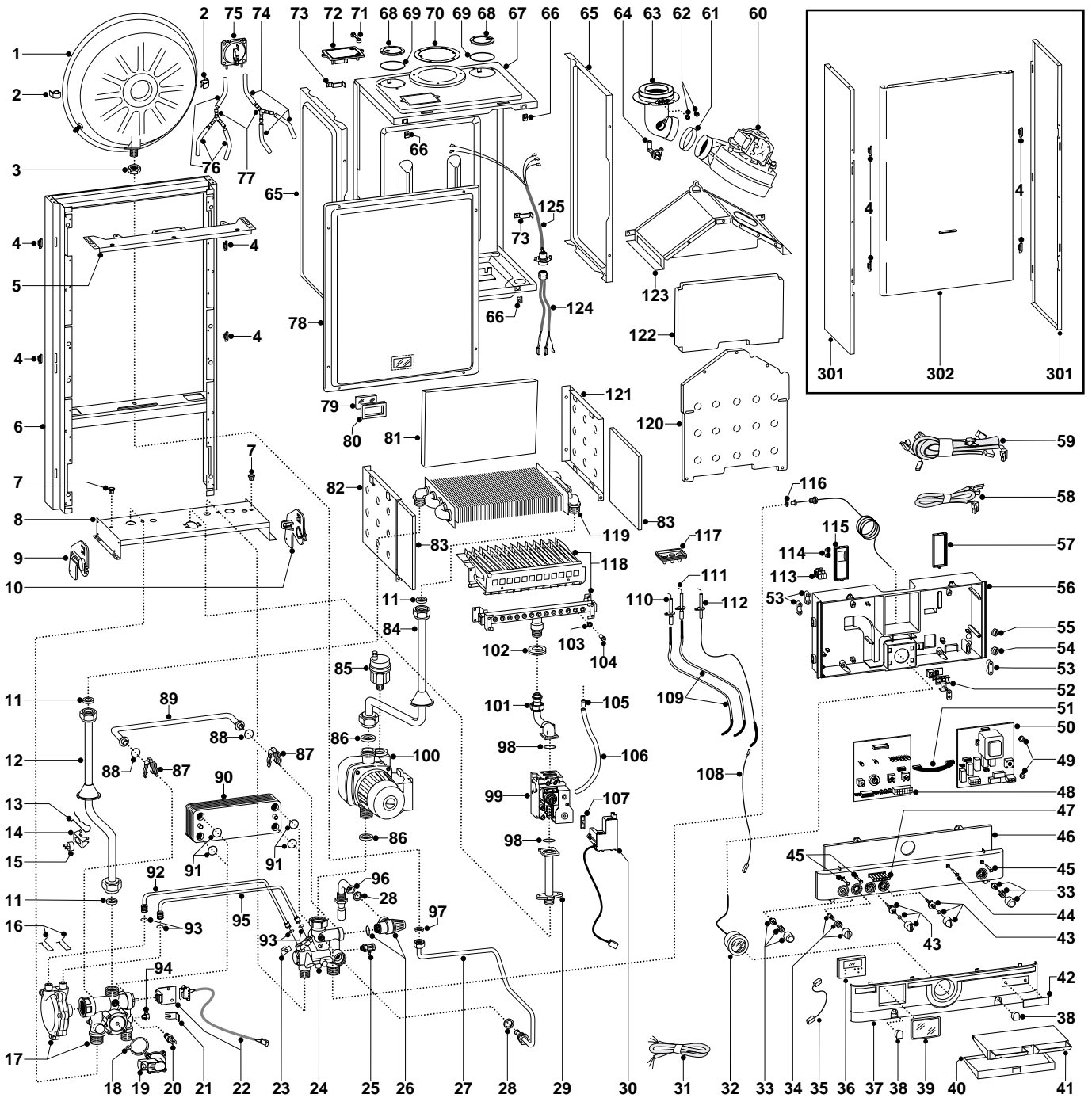
Model

EuroCombi A23 MFFI UK

Edition 3

Current from Serial No: 2320015700001 to -----





MODELS	CHARACTERISTICS	SERIAL NO: VALIDITY	REF.
A 23 MFFI UK	METHANE	2320015700001	A
A 23 MFFI UK	LPG	2320015700001	B

PART.	CODE	DESCRIPTION	REF.	NOTE
1	573294	Expansion vessel		
2	999228	Expansion vessel insert		
3	573244	3/8" lock nut		
4	574302	Casing support bracket (plastic)		
5	572984	Casing support bracket		
6	-----	Frame		11
7	570772	Cable holder		
8	-----	Hydraulic group support		11
9	998042	Hydraulic support bracket (L/H)		
10	998041	Hydraulic support bracket (R/H)		
11	573520	Gasket 3/4"		
12	997199	Pipe (main exchanger - 3 way group)		
13	998043	Fixing spring (overheat thermostat)		
14	997224	Mounting bracket (overheat thermostat)		
15	997206	Thermostat (overheat)		
16	573809	Spring (water venturi)		
17	998069	3-way pressure gauge valve group		
18	571547	Diaphragm (main flow switch)		
19	998099	Main circuit flow switch		
20	569236	Temperature probe (C.H.W.)		
21	573824	Bracket (M/Flow microswitch)		
22	998921	Microswitch		
23	571838	Pipe fixing clip		
24	998072	Return group		
25	573727	Manual vent cock		
26	573172	Safety valve (1/2" 3 bar)		
27	573311	Pipe (expansion vessel)		
28	573528	Gasket 1/2"		
29	997202	Pipe (gas inlet)		
30	999166	Spark generator		
31	998012	Cable (power supply)		
32	571649	Pressure gauge		
33	997250	On-Off push-button kit		
34	997252	Summer/Winter selector Kit		
35	997180	Cable (time clock connection)		
36	997207	Time clock		
37	997144	Control panel cover		
38	997138	Inspection cover		
39	997142	Cover (time clock protection)		
40	997167	Plastic cover door		
41	997168	Warning plate lid inner frame		
42	997139	Name badge		
43	997251	Regulation knob kit		
44	573370	L.E.D. cover		
45	572913	L.E.D. (power indicator)		
46	999509	Control panel cover		
47	572912	L.E.D. (temperature bank)		
48	953770	Printed circuit board (EX C MI/FFI)		
49	569711	Nylon bush (10mm)		
50	952975	Printed circuit board (EI A-FFI/P)		
51	952610	Cable (P.C.B.)		
52	-----	Terminal board		11
53	571562	Cable clamp		
54	569458	Cable holders silicone D.2		
55	573534	Cable holder D.75		
56	-----	Control panel		11
57	569713	Cable holder cover (R.H.)		
58	998104	Low voltage wiring		
59	574272	High voltage wiring		
60	998807	Fan		
61	573343	Gasket (fan inlet)		
62	573326	Flue intake plug		
63	573333	Flue (exhaust manifold / header)		
64	573314	Venturi (exhaust/manifold header)		
65	573247	Panel (sealed chamber - side)		

PART.	CODE	DESCRIPTION	REF.	NOTE
66	570717	Spring (fastening)		
67	-----	Sealed chamber		11
68	573330	Air return cover		
69	573865	Flue gasket		
70	573337	Gasket (flue manifold)		
71	573329	Pressure intake cover		
72	997203	Support plate (air pressure switch)		
73	998108	Cable clamp		
74	571575	Silicone pipe (positive signal)		
75	571651	Air pressure switch		
76	569662	Silicone pipe		
77	573327	"Y" piece (air pressure)		
78	573344	Panel (front - sealed chamber)		
79	998075	View window glass		
80	998076	Gasket (view window glass)		
81	998132	Back insulation panel		
82	573243	Combustion panel (L.H.)		
83	998128	Side insulation panel		
84	573313	Pipe (main exchanger - pump)		
85	564254	Auto air vent		
86	569387	Gasket 1"		
87	998064	Spring (by-pass pipe)		
88	998077	O-ring gasket		
89	998065	By-pass pipe		
90	571646	Secondary exchanger (p-type 23kW)		
91	573825	O-Ring (secondary exchanger)		
92	573086	Pipe (main flow switch - positive signal)		
93	571807	O-Ring (20-18)		
94	570615	1/8" Brass plug		
95	573087	Pipe (main flow switch - negative signal)		
96	999524	Pipe (safety valve)		
97	573521	Gasket 3/8"		
98	571965	O-Ring (13)		
99	999089	Gas valve (SIT 845 SIGMA)		
100	997150	Pump		
101	574194	Pipe (gas outlet)		
102	569443	Silicone seal		
103	572138	Burner jet washer		
104	570248	Burner jet (NG 1.25)	A	
104	570251	Burner jet (LPG 0.72)	B	
105	573325	Rivet		
106	573576	Compensation tube		
107	574279	Gasket		
108	571657	Cable (detection electrode/P.C.B.)		
109	571662	Cable (ignition electrode)		
110	569561	Electrode (Ignition L.H.)		
111	569560	Electrode (Ignition R.H.)		
112	573441	Electrode (Detection)		
113	571787	Terminal board (two pole)		
114	569720	Blind grommet		
115	569714	Cable holder cover (L.H.)		
116	569390	Gasket 1/4"		
117	998147	Ignition electrode cable rubber		
118	572271	Burner 13 ramp (natural gas)	A	
118	572277	Burner 13 ramp (LPG)	B	
119	998138	Main exchanger		
120	997766	Panel (front)		
121	573242	Combustion panel (R.H.)		
122	998131	Insulation panel (front)		
123	997767	Flue hood (sealed chamber)		
124	999119	Cable (P.C.B./fan/air pressure switch)		
125	998106	Cable (fan/air pressure switch)		
301	998414	Case panel (side)		
302	997721	Case panel (front)		

PART.	CODE	DESCRIPTION	REF.	NOTE
511	570744	Isolating valve 3/4" (flow)		
512	998812	Pipe (C.H. flow)		
513	571000	Isolating valve (gas inlet)		
514	570743	Isolating valve 1/2" (D.H.W. inlet)		
515	998809	Drain valve		
516	999694	Isolating valve 3/4" (return)		
517	573520	Gasket 3/4"		
518	998811	Pipe (C.H. return)		
519	573528	Gasket 1/2"		
520	997706	Pipe (cold water inlet)		
521	997700	Pipe (gas inlet)		
522	998810	Pipe (D.H.W. outlet)		
531	569281	Burner jet 1.25mm full kit (NG)		12
532	569282	Burner jet 0.72 full kit (LPG)		12

NOTE	DESCRIPTION
11	Not supplied as a spare part
12	Not illustrated

PART.	NOTIFICATION OF CHANGES	
	Spares listed below are not interchangeable with those in Ed.2	
2	999228 - Expansion vessel insert	- replaces code 573310 from serial number: 2320015700001
9	998042 - Hydraulic support bracket (L/H)	- replaces code 574292 from serial number: 2320015700001
10	998041 - Hydraulic support bracket (R/H)	- replaces code 574291 from serial number: 2320015700001
13	998043 - Fixing spring (overheat stat)	- replaces code 997206 from serial number: 2320015700001
17	998069 - Flow group	- replaces code 573121 from serial number: 2320015700001
18	571547 - Diaphragm (main flow switch)	- not listed on original drawing
19	998099 - Main circuit flow switch	- replaces code 573224 from serial number: 2320015700001
22	998921 - Microswitch	- replaces code 573340 from serial number: 2320015700001
24	998072 - Return group	- replaces code 573163 from serial number: 2320015700001
30	999166 - Spark generator	- replaces code 573023 from serial number: 2320015700001
34	997252 - Summer/Winter selector kit	- replaces code 573306 from serial number: 2320015700001
46	999509 - Control panel cover	- replaces code 997145 from serial number: 2320015700001
48	953770 - Printed circuit board (low voltage)	- replaces code 953730 from serial number: 2320015700001
50	952975 - Printed circuit board (high voltage)	- replaces code 952975 from serial number: 2320015700001
58	998104 - Low voltage wiring	- replaces code 998046 from serial number: 2320015700001
60	998807 - Fan	- replaces code 572989 from serial number: 2320015700001
65	573247 - Panel (sealed chamber - side)	- not listed on original drawing
73	998108 - Cable clamp	- replaces code 570561 from serial number: 2320015700001
79	998075 - Sight glass	- replaces code 573567 from serial number: 2320015700001
80	998076 - Gasket (sight glass)	- replaces code 569442 from serial number: 2320015700001
81	998132 - Insulation panel (rear)	- replaces code 573723 from serial number: 2320015700001
83	998128 - Insulation panel (side)	- replaces code 573720 from serial number: 2320015700001
87	998064 - Spring (by-pass pipe)	- replaces code 573808 from serial number: 2320015700001
88	998077 - 'O' ring gasket	- replaces code 571449 from serial number: 2320015700001
89	998065 - By-pass pipe	- replaces code 573245 from serial number: 2320015700001
96	999524 - Pipe (safety valve)	- replaces code 998019 from serial number: 2320015700001
99	999089 - Gas valve (SIT 845 SIGMA)	- replaces code 570732 from serial number: 2320015700001
120	997766 - Case panel (front)	- replaces code 573722 from serial number: 2320015700001
124	999119 - Cable (P.C.B./fan/air pressure sw.)	- replaces code 573017 from serial number: 2320015700001
125	998106 - Cable (fan/air pressure switch)	- replaces code 573017 from serial number: 2320015700001
301	998414 - Case panel (side)	- replaces code 572696 from serial number: 2320015700001