



SPARE PARTS EXPLODED VIEW
WALL-HUNG GAS BOILERS

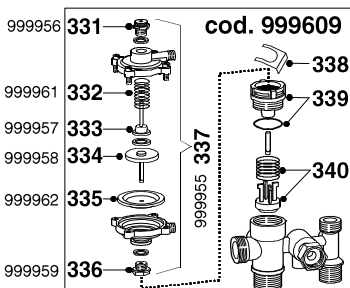
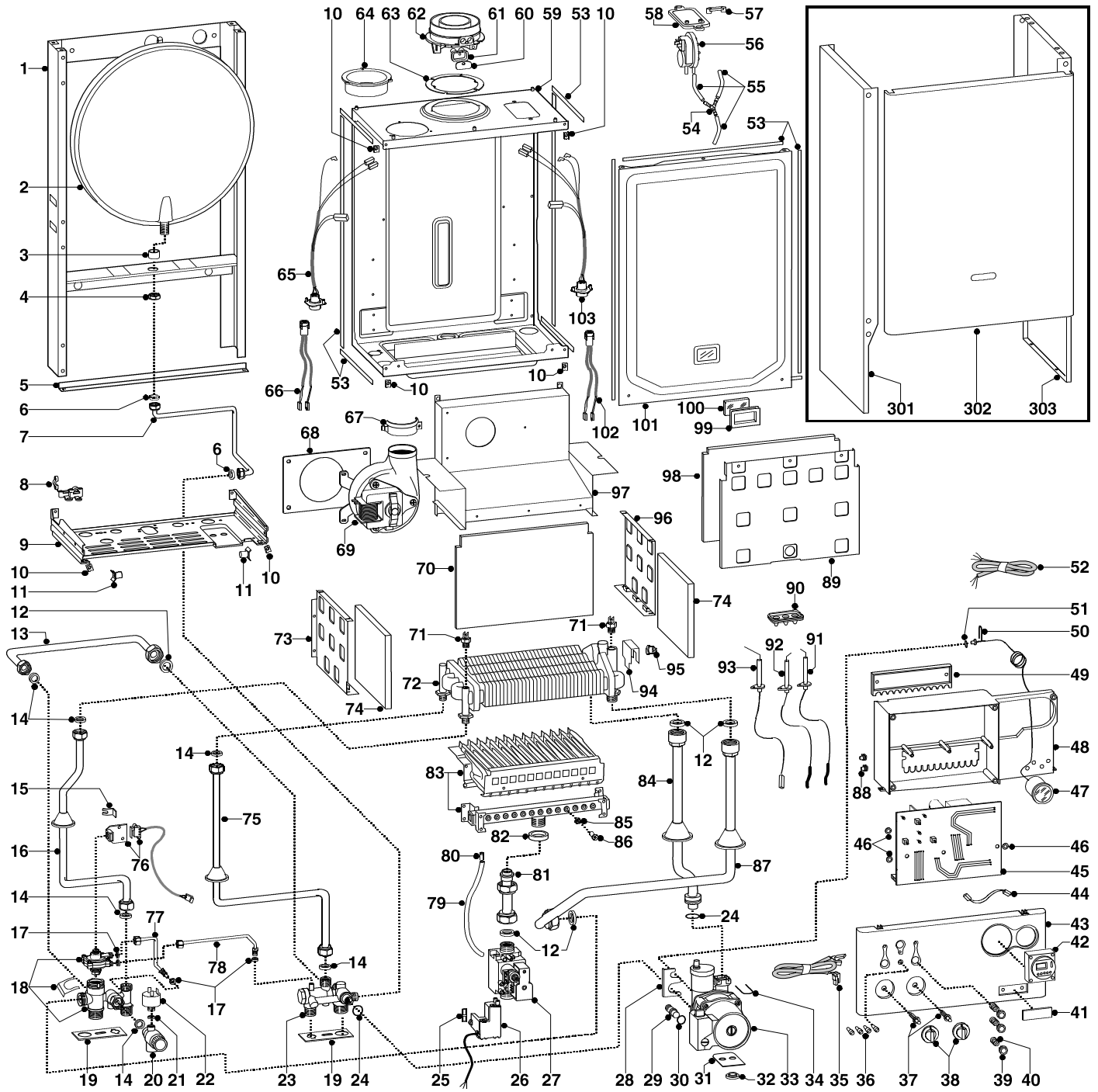
Models

microCOMBI 23 MFFI

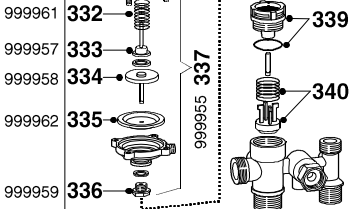
Edition 1

Current from Serial No:- 2320018200001 to 2320033400001

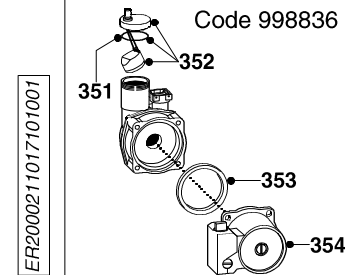




cod. 999609



Code 998836

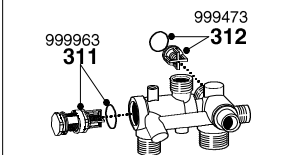


997077

998013

999960

cod. 999610



999963

999473

ER2000211017101001

MODELS	CHARACTERISTICS	SERIAL NO: VALIDITY	REF.
MICROCOMBI 23 MFFI	METHANE	2320018200001	A
MICROCOMBI 23 MFFI	LPG	2320018200001	B

PART.	CODE	DESCRIPTION	REF.	NOTE
1	-----	Frame		11
2	998616	Expansion vessel		
3	998776	Bush		
4	998581	3/8" lock nut		
5	999594	Frame support		
6	573521	Gasket 3/8"		
7	999105	Pipe (expansion vessel)		
8	998580	Cable holder		
9	-----	Hydraulic group support		11
10	570717	Spring (fastening)		
11	998569	Pivot		
12	573520	Gasket 3/4"		
13	999941	By-pass pipe		
14	573528	Gasket 1/2"		
15	573824	Bracket (M/flow microswitch)		
16	999701	Pipe (D.H.W. outlet)		
17	572244	Gasket 1/8"		
18	999609	Flow group		
19	999601	Gasket (anti-vibration)		
20	998447	Safety valve (1/4" 3 Bar)		
21	569390	Gasket 1/4"		
22	998627	Low water pressure switch		
23	999610	Return group		
24	998424	O-ring		
25	574279	Gasket		
26	999919	Spark generator		
27	997089	Gas valve (SIT 845 SIGMA)		
28	999162	Pump bracket		
29	999598	Pump plug		
30	997182	Gasket		
31	999602	Spacer plate (pump)		
32	999100	Lock washer		
33	998836	Pump		
34	997153	U-clip		
35	999930	Cable (P.C.B./pump)		
36	999593	L.E.D.		
37	999592	Spindle (knobs)		
38	999596	Control knob		
39	999597	Push button		
40	999595	Spring (push button)		
41	997824	Name badge (plastic)		
42	999599	Clock		
43	999384	Control panel		
44	999721	Clock cable		
45	999724	P.C.B. (T2 MFFI)		
46	569711	Nylon bush (10mm)		
47	999245	Pressure gauge		
48	-----	Control panel		11
49	998953	Cable holder cover		
50	571548	U-Clip (pressure gauge)		
51	998517	Gasket		
52	999521	Cable (power supply)		
53	998516	Gasket (adhesive 10x6)		
54	573327	"Y" piece (air pressure)		
55	571575	Silicone pipe (positive signal)		
56	998484	Air pressure switch		
57	573329	Pressure intake cover		
58	997203	Support plate (air pressure switch)		
59	-----	Sealed chamber		11
60	998565	Cover (flue test point)		
61	998636	Gasket (flue test point)		
62	999561	Flue (exhaust manifold/header)		
63	998637	Gasket (flue collar)		
64	998595	Plug (air intake)		
65	998633	Cable (fan)		

ER2000211017101001

PART.	CODE	DESCRIPTION	REF.	NOTE
66	999928	Cable (P.C.B./fan)		
67	998566	Fixing clamp (fan)		
68	999135	Insulation panel (fan)		
69	999397	Fan		
70	998640	Insulation panel (rear)		
71	998458	Temperature probe		
72	998619	Exchanger (twin pass)		
73	998600	Panel (combustion chamber - L.H. side)		
74	998639	Insulation panel (Side)		
75	999394	Pipe (cold water inlet)		
76	999918	Cable (M/flow switch)		
77	999940	Pipe (negative signal)		
78	999939	Pipe (positive signal)		
79	573576	Compensation tube		
80	573325	Rivet		
81	998729	Pipe (gas valve)		
82	569443	Silicone seal		
83	998618	Burner 12 ramp (natural gas)	A	
83	998669	Burner 12 ramp (L.P.G.)	B	
84	998731	Pipe (C.H. return)		
85	572138	Burner jet washer		
85	998714	Burner jet (NG 1.30)	A	
86	998715	Burner jet (LPG 0.77)	B	
87	999702	Pipe (C.H. flow)		
88	569720	Blind grommet		
89	998598	Panel (combustion chamber front)		
90	998147	Ignition electrode cable rubber		
91	998623	Electrode (Ignition R.H.)		
92	998622	Electrode (Ignition L.H.)		
93	998624	Detection electrode		
94	998582	Fixing spring (overheat thermostat)		
95	997206	Thermostat (overheat)		
96	998599	Panel (combustion chamber - R.H. side)		
97	999385	Flue hood		
98	998638	Insulation panel (front)		
99	998076	Gasket (sight glass)		
100	998075	Sight glass		
101	999151	Panel (combustion chamber - front)		
102	999929	Cable (P.C.B./air pressure switch)		
103	999425	Wiring (air pressure switch/probe)		
301	998477	Case panel (L.H. side)		
302	999316	Case panel (front)		
303	998476	Case panel (R.H. side)		
351	998644	O-ring (A.A.V.)		
352	998643	Auto Air Vent		
353	998738	Gasket (pump head)		
354	998961	Pump head		
361	998716	Burner jet (full kit - N.G.)		12
362	998717	Burner jet (full kit - L.P.G.)		12

NOTE	DESCRIPTION
11	Not supplied as a spare part
12	Not illustrated

ER2000211017101001