



SPARE PARTS EXPLODED VIEW WALL-HUNG GAS BOILERS

Models

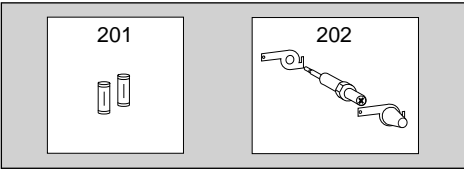
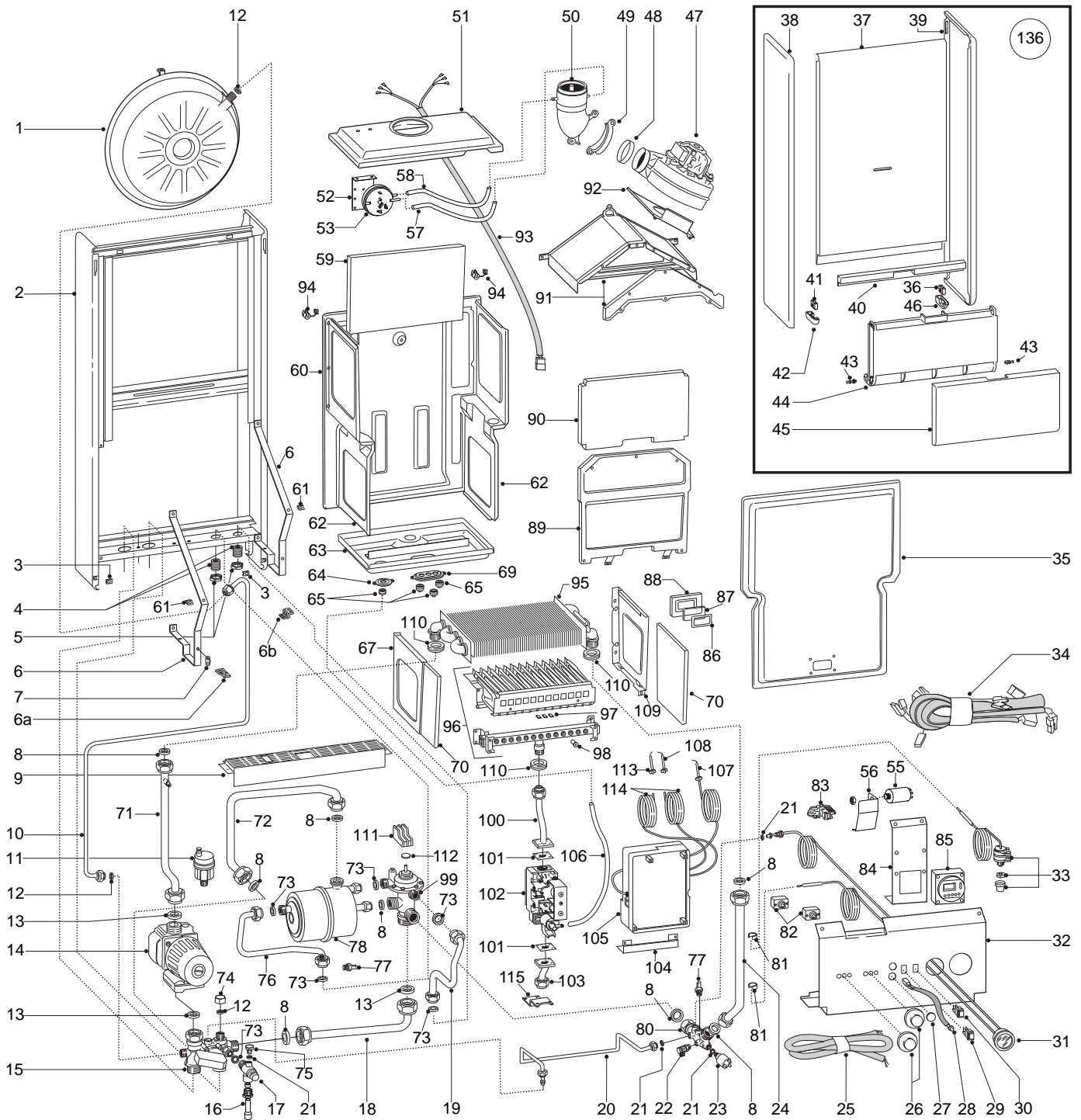
DIA 20 MFFI CE

DIA 24 MFFI CE

Edition 2



MODELS	CODE	SERIAL NO. VALIDITY	REF.
DIA 20 MFFI CE	533632	From 96010000 to -----	A
DIA 20 MFFI CE LPG	533633	From 96010000 to -----	B
DIA 24 MFFI CE	534028	From 96010000 to -----	C
DIA 24 MFFI CE LPG	534029	From 96010000 to -----	D



PART	CODE	DESCRIPTION	REF.	NOTE
1	564492	Expansion vessel		
2	570805	Boiler frame		
3	565128	Fastening spring		
4	573531	Brass nipple 1/2"		
5	573530	Securing nut 1/2"		
6	571963	Holder for control panel		
6a	569192	Left hand side hinge		
6b	566093	Right hand side hinge		
7	569604	Earth symbol		
8	573520	Gasket 3/4"		
9	572381	Grill		
10	570575	Pipe (expansion vessel)		
11	564254	Automatic air release valve		
12	573521	Gasket 3/8"		
13	569387	Gasket 1"		
14	570590	Pump	AB	
14	570931	Pump	CD	
15	570533	C.H. flow return group		
16	570932	Drainage pipe		
17	569292	Safety valve		
18	570454	Pipe (C.H. flow)		
19	570751	Pipe (D.H.W. inlet)		
20	571119	Pipe (upper main flow switch)		
21	569390	Gasket 1/4"		
22	573727	Drain cock		
23	570605	Pump pressure switch		
24	570449	Pipe (C.H.W.)	AB	
24	570450	Pipe (C.H.W.)	CD	
25	570593	Main power supply cord		
26	569421	Control knob		
27	569422	Plastic plug		
28	560171	Wired reset button		
29	569423	Summer/winter switch		
30	569424	On/off switch with neon		
31	571832	Temperature pressure gauge		
32	571672	Control panel		
33	571829	Overheat thermostat		
34	571696	Wiring loom		
35	569605	Sealed chamber front panel	AB	
35	569606	Sealed chamber front panel	CD	
36	569474	Female insert R.H. hinge		
37	569657	Frontal casing panel		
38	569656	L.H. casing panel		
39	569655	R.H. casing panel		
40	569476	Plastic insert		
41	569475	Female insert for L.H. hinge		
42	569473	Female insert housing L.H. hinge		
43	569470	Hinge pivot		
44	569471	Case door insert		
45	569469	Case door		
46	569472	Female insert housing R.H. hinge		
47	569431	Fan	AB	
47	573434	Fan	CD	
48	569433	Fan seal		
49	569434	Collar for venturi device		
50	572382	Venturi device		
51	571844	Sealed chamber cover	AB	
51	571845	Sealed chamber cover	CD	
52	571635	Air pressure switch bracket		
53	571651	Air pressure switch	AB	
53	571652	Air pressure switch	CD	
55	572660	Radio suppressor		

PART	CODE	DESCRIPTION	REF.	NOTE
56	571790	Radio suppressor bracket		
57	571574	Silicone pipe - negative signal		
59	573723	Back insulation panel	AB	
59	573724	Back insulation panel	CD	
60	571791	Sealed chamber back support	AB	
60	571792	Sealed chamber back support	CD	
61	569201	Spring clip		
62	569454	Sealed chamber side panel		
63	571611	Sealed chamber lower cover	AB	
63	571789	Sealed chamber lower cover	CD	
64	569457	Inspection plate (detection election)		
65	569458	Cable holders		
67	570474	Panel (combustion chamber L.H.)		
69	571612	Inspection plate (three hole)		
70	573720	Side insulation panel		
71	570719	Pipe (pump - to main exchanger)		
72	570453	Pipe (sec. exchanger to C.H. return group)		
73	573528	Gasket 1/2"		
74	570491	Plug female 3/8"		
75	569259	Plug male 1/4"		
76	570640	Pipe (D.H.W.)		
77	569236	Temp probe		
78	566098	Secondary exchanger		
79	570788	Plastic cap		
80	570565	Multifunctional hydraulic connector		
81	571565	Phial clip		
82	691150	Potentiometer		
83	569391	Main power supply cord clamp		
84	570933	Time clock support		
85	569538	Time clock (digital)		
86	569442	View window seal		
87	573567	View window glass		
88	573566	View window holder		
89	572647	Panel (combustion chamber front)	AB	
89	572648	Panel (combustion chamber front)	CD	
90	573721	Front insulation panel	AB	
90	573722	Front insulation panel	CD	
91	570518	Flue hood	AB	
91	570519	Flue hood	CD	
92	569429	Fan support plate	AB	
92	573048	Fan support plate	CD	
93	572168	Fan supply cord		
94	570561	Fan power supply cord clamp		
95	569487	Main exchanger	AB	
95	569562	Main exchanger	CD	
96	572271	Burner (natural gas)	A	
96	572343	Burner (natural gas)	C	
96	572272	Burner (LPG)	B	
96	572344	Burner (LPG)	D	
97	570608	Spring clips for electrodes		
98	570248	Burner jet (1.25mm)	A	
98	570251	Burner jet (0.72mm)	B	
99	560166	Divertor valve		
100	572698	Pipe (gas valve to burner)		
101	569254	Gas valve gasket		
102	570732	Gas valve (sit tandem)		
103	570750	Pipe (gas inlet)		
104	569462	Lower P.C.B. support		
105	950331	P.C.B.		
106	573576	Compensation tube		
107	573441	Detection electrode		

PART	CODE	DESCRIPTION	REF.	NOTE
108	569560	Ignition electrode (R.H.)		
109	570473	Panel (combustion chamber R.H.)		
110	569443	Silicone seal		
111	569172	Micro switch (single)		
112	569451	Pushing cap		
113	569561	Ignition electrode (L.H.)		
114	569503	Cable (ignition electrode)		
115	570446	Gas valve support		
116	570712	Sit tandem operator coils		
117	569281	Burner jet (1.25mm) full kit	AC	
117	569282	Burner jet (0.72mm) full kit	BD	
118	571409	Bolts and expansion caps full kit		
119	570741	Wall hanging bracket		
122	570809	Paper wall template		
123	571000	Valve kit: gas cock		
124	570813	Valve kit: D.H.W. outlet pipe		
125	570812	Valve kit: D.W. inlet pipe		
126	570743	Valve kit: D.W. inlet cock		
127	570818	Valve kit: gas inlet pipe		
129	570817	Valve kit: C.H. flow-return pipe		
131	573740	Sit tandem modureg coil		
136	570738	Full case assembled		
201	950030	Fast fuse 2AT		
202	573745	Gas modular cartridge		
371	570714	Service kit (main flow switch)		
372	570713	Micro switch (main flow switch)		
373	573824	Retaining clip (main flow switch)		

PART. NOTIFICATION OF CHANGES		
Spares listed below are not interchangeable with those in Ed.1		
20	571119 - Pipe (main flow switch - upper)	- replaces code 570664 from serial number: 96010000
34	571696 - Wiring loom	- replaces code 570748 from serial number: 96010000
51	571844 - Cover (combustion chamber - DIA 20)	- replaces code 570550 from serial number: 96010000
51	571845 - Cover (combustion chamber - DIA 24)	- replaces code 997224 from serial number: 96010000
53	571651 - Air pressure switch (DIA 20)	- replaces code 570549 from serial number: 96010000
53	571652 - Air pressure switch (DIA 24)	- replaces code 573452 from serial number: 96010000
55	572660 - Radio suppressor	- not listed on original drawing
56	571790 - Bracket (radio suppressor)	- not listed on original drawing
57	571574 - Tube (air pressure switch - negative)	- replaces code 569863 from serial number: 96010000
60	571791 - Support (sealed chamber - rear - DIA 20)	- replaces code 570612 from serial number: 96010000
60	571792 - Support (sealed chamber - rear - DIA 24)	- replaces code 571264 from serial number: 96010000
63	571611 - Lower cover (sealed chamber - DIA 20)	- replaces code 570551 from serial number: 96010000
63	571789 - Lower cover (sealed chamber - DIA 24)	- replaces code 570552 from serial number: 96010000
69	571612 - Inspection plate	- replaces code 569459 from serial number: 96010000
72	570453 - Pipe (sec. exchanger - CH return group)	- replaces code 571565 from serial number: 96010000
81	571565 - Phial clip	- replaces code 570543 from serial number: 96010000
93	572168 - Fan supply cable	- replaces code 570591 from serial number: 96010000