



SPARE PARTS EXPLODED VIEW  
GAS WALL BOILER

Model

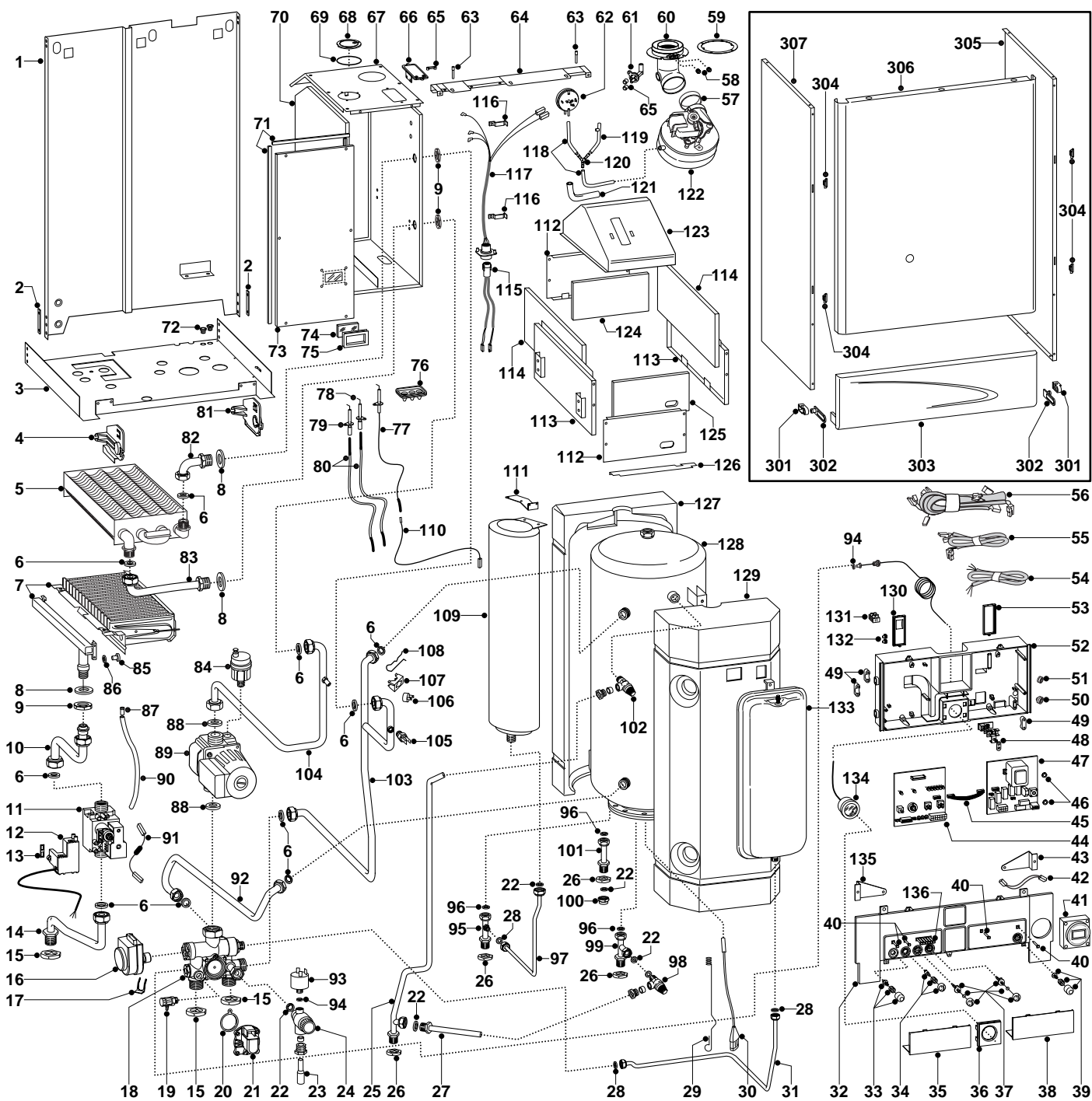
**GENUS 27 BFFI PLUS**

---

Edition 2

Current from Serial No:- 2320020100002 to 2320102500001





ER2001210020002011

MODEL	CHARACTERISTICS	SERIAL NO: VALIDITY	REF.
GENUS 27 BFFI PLUS	METHANE	2320020100002	A
GENUS 27 BFFI PLUS	LPG	2320020100002	B

<b>PART.</b>	<b>CODE</b>	<b>DESCRIPTION</b>	<b>REF.</b>	<b>NOTE</b>
1	-----	Frame		11
2	-----	Frame spacer		11
3	-----	Hydraulic group support		11
4	999164	Control panel bracket holder (L.H.)		
5	573435	Main exchanger		
6	573520	Gasket 3/4"		
7	572625	Burner 15 ramp (natural gas)	A	
7	572626	Burner 15 ramp (LPG)	B	
8	569413	Gasket 37x26x2		
9	569446	Lock Nut (Brass) 3/4"		
10	998701	Pipe (gas valve/burner)		
11	997089	Gas valve (SIT 845 SIGMA)		
12	999166	Spark generator		
13	574279	Gasket		
14	998890	Pipe (gas inlet)		
15	573523	Lock nut 3/4"		
16	997147	Motor (3-Way valve)		
17	997077	Fixing clip (motor)		
18	998799	Hydraulic group		
19	573727	Drain valve		
20	571547	Diaphragm (main flow switch)		
21	998099	Main circuit flow switch		
22	573528	Gasket 1/2"		
23	573190	Drainage pipe		
24	569292	Safety valve (3 bar)		
25	999430	Pipe (cylinder discharge)		
26	573530	Lock nut 1/2"		
27	999433	Pipe (safety valve outlet)		
28	573521	Gasket 3/8"		
29	570542	Spring (D.H.W. probe)		
30	573015	Temperature probe (D.H.W.)		
31	998922	Pipe (C.H. pressure vessel)		
32	999472	Control panel (front)		
33	571982	Reset Button		
34	571983	Summer/winter selector kit		
35	571627	Inspection cover (L.H.)		
36	571622	Pressure gauge cover		
37	571984	Control knob kit		
38	571623	Inspection Cover (R.H.)		
39	998015	Push button kit		
40	571550	Power Indicator L.E.D. lens		
41	569538	Time clock (digital)		
42	573101	Cable (time clock)		
43	999202	Control panel holder (R.H.)		
44	953082	Printed circuit board (low voltage)		
45	952610	Cable (P.C.B.)		
46	569711	Nylon bush (10mm)		
47	952935	Printed circuit board (high voltage)		
48	-----	Terminal board		11
49	571562	Cable clamp		
50	569458	Cable holders silicone D.2		
51	573534	Cable holder D.75		
52	-----	Control panel		11
53	571967	Cable cover (R.H.)		
54	998012	Cable (power supply)		
55	999427	Low voltage wiring		
56	999300	High voltage wiring		
57	573343	Gasket (fan inlet)		
58	573326	Flue intake plug		
59	573337	Gasket (flue manifold)		
60	999682	Flue exhaust manifold		21
61	-----	Venturi (exhaust/manifold header)		22
62	998484	Air pressure switch		
63	998426	Pivot		
64	999176	Casing support bracket		

ER2001210020002011

PART.	CODE	DESCRIPTION	REF.	NOTE
65	573329	Pressure intake cover		
66	997203	Support plate (air pressure switch)		
67	999065	Cover (sealed chamber)		
68	573330	Air return cover		
69	573865	Flue gasket		
70	-----	Sealed chamber		11
71	998516	Gasket (adhesive 10x6)		
72	570772	Cable holder		
73	998392	Panel (front - sealed chamber)		
74	998075	Sight glass		
75	998076	Gasket (sight glass)		
76	998147	Ignition electrode cable rubber		
77	573441	Electrode (Detection)		
78	569560	Electrode (Ignition R.H.)		
79	569561	Electrode (Ignition L.H.)		
80	998724	Ignition electrode cable		
81	999163	Control panel bracket holder (R.H.)		
82	570584	Pipe (return - main exchanger)		
83	570585	Pipe (flow - main exchanger)		
84	564254	Auto air vent		
85	570248	Burner jet (NG 1.25)	A	
85	570251	Burner jet (LPG 0.72)	B	
86	572138	Burner jet washer		
87	573325	Rivet		
88	569387	Gasket 1"		
89	999434	Pump		
90	573576	Compensation tube		
91	998008	Cable (resistive)		
92	998526	Pipe (return cylinder)		
93	998627	Low water pressure switch		
94	569390	Gasket 1/4"		
95	999412	Pipe (D.H.W. cylinder - outlet)		
96	999408	Gasket 1/2"		
97	999413	Pipe (D.H.W. vessel - outlet)		
98	573139	Expansion relief valve 6 bar		
99	995350	Pipe (cold water inlet)		23
100	570571	1/2" brass cap		
101	995331	Pipe (secondary return)		24
102	573140	Temperature/pressure relief valve (7 bar)		
103	998910	Pipe (flow - cylinder)		
104	999431	Pipe (pump to main heat exchanger)		
105	998458	Temperature probe		
106	997206	Thermostat (overheat)		
107	997224	Mounting bracket (overheat thermostat)		
108	998043	Mounting bracket (overheat thermostat)		
109	999403	Expansion vessel (D.H.W.)		
110	571657	Cable (detection electrode/P.C.B.)		
111	999419	Support bracket (D.H.W. vessel)		
112	570553	Panel (combustion chamber front)		
113	999161	Panel (combustion chamber - side)		
114	998136	Panel (insulation - side)		
115	999178	Cable (fan/P.C.B.)		
116	998108	Cable clamp		
117	998725	Cable (fan/air pressure switch)		
118	569662	Silicone pipe		
119	571819	Silicone pipe (negative signal)		
120	573327	"Y" piece (air pressure)		
121	-----	Pipe-joint		11
122	998806	Fan		
123	998891	Flue hood		
124	998148	Insulation panel (rear)		
125	998133	Insulation panel (front)		
126	573113	Air diffuser		
127	570534	Cylinder polyurethane shell (rear)		
128	573127	D.H.W. cylinder 60 l		

PART.	CODE	DESCRIPTION	REF.	NOTE
129	570535	Cylinder polyurethane shell (front)		
130	571968	Cable cover (L.H.)		
131	573091	Terminal board (three pole)		
132	569720	Blind grommet		
133	573456	Expansion vessel (C.H.)		
134	571649	Pressure gauge		
135	999203	Control panel holder (L.H.)		
136	571551	Temperature L.E.D. lens bank		
301	573360	Hinge		
302	998009	Hinge arm		
303	999948	Control panel cover		
304	574302	Casing support bracket (Plastic)		
305	999169	Case panel (R.H. side)		
306	999114	Panel (front case)		
307	999170	Case panel (L.H. side)		
311	569281	Burner jet 1.25mm full kit (NG)		12
312	569282	Burner jet 0.72 full kit (LPG)		12

NOTE	DESCRIPTION
11	Not supplied as a spare part
12	Not illustrated

PART.	NOTIFICATION OF CHANGES
	<b>Spares listed below are not interchangeable with those in Ed.1</b>
60	999682 - Flue exhaust manifold header - replaces code 998120 from serial number: 2320029700001
61	- Venturi (exhaust manifold header) - no longer available from serial number: 2320029700001
99	995350 - Pipe cold water inlet - replaces code 999432 from serial number: 2320101700001
101	995331 - Pipe (secondary return) - replaces code 999429 from serial number: 2320101700001