

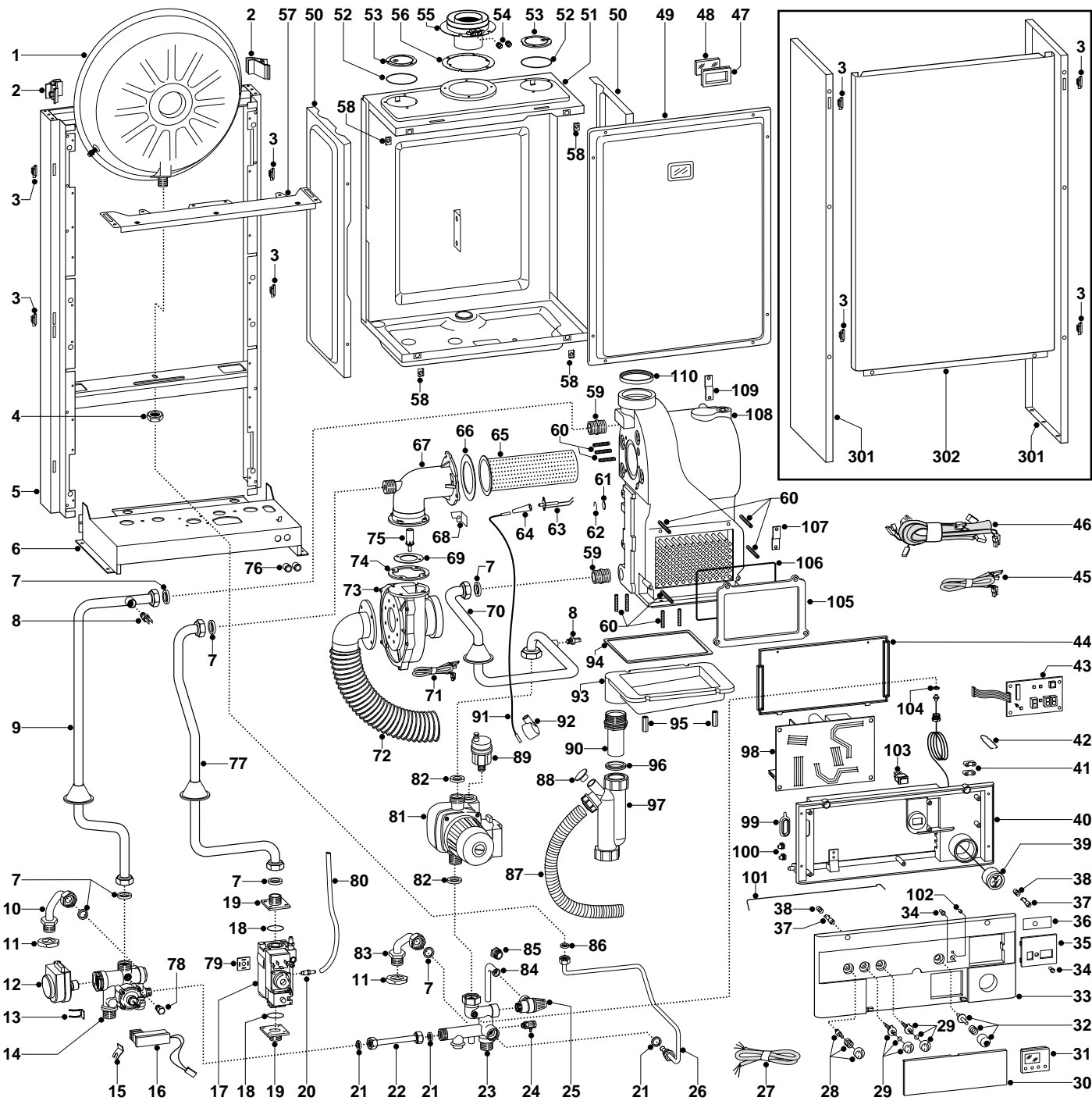


SPARE PARTS EXPLODED VIEW
WALL-HUNG GAS BOILERS
Models
ecoGENUS 24 RFFI SYSTEM

Edition 2

Current from Serial No:- 2320033400001 to -----





ER2001211009802.001

MODELS	CHARACTERISTICS	SERIAL NO: VALIDITY	REF.
ECOGENUS 24 RFFI SYS	METHANE	2320033400001	A
ECOGENUS 24 RFFI SYS	LPG	2320033400001	B

PART.	CODE	DESCRIPTION	REF.	NOTE
1	573294	Expansion vessel		
2	999679	Expansion vessel insert		
3	574302	Casing support bracket (Plastic)		
4	573244	3/8" lock nut		
5	-----	Frame		11
6	-----	Hydraulic group support		11
7	573520	Gasket 3/4"		
8	998458	Temperature probe		
9	998655	Pipe (C.H. flow)		
10	573169	Pipe (cylinder flow)		
11	573523	Lock nut 3/4"		
12	997147	Motor (3-Way valve)		
13	997077	Fixing clip (motor)		
14	998456	Flow group		
15	573824	Bracket (m/flow microswitch)		
16	995296	Wired microswitch		
17	571438	Gas valve		
18	565048	O-ring gasket (gas valve)		
19	999536	Union (gas valve)		
20	573793	Intake (pressure - control valve)		
21	573528	Gasket 1/2"		
22	572911	By-pass pipe		
23	997828	Return group		
24	573727	Drain valve		
25	573172	Safety valve (1/2" 3 bar)		
26	573311	Pipe (expansion vessel)		
27	999424	Wiring (power supply)		
28	573302	Summer/Winter selector kit		
29	998747	Control knob kit		
30	998661	Door (instruction/time clock)		
31	997207	Time clock		
32	998772	On/off push button kit		
33	998779	Control panel (front)		
34	998751	Button (reset)		
35	999073	Cover (display)		
36	998766	Film (display)		
37	998381	Pin (front cover)		
38	998739	Fixing spring (front cover)		
39	571649	Pressure gauge		
40	-----	Control panel		11
41	571562	Cable clamp		
42	999993	Fixing spring (control panel)		
43	998765	P.C.B. (display)		
44	-----	Cover		11
45	999491	Low volatage wiring		
46	998676	High voltage wiring		
47	998076	Gasket (sight glass)		
48	998075	Sight glass		
49	574104	Panel (sealed chamber - front)		
50	573247	Panel (sealed chamber - side)		
51	-----	Sealed chamber		11
52	573865	Flue gasket		
53	573330	Air return cover		
54	573326	Flue intake plug		
55	999400	Flue exhaust manifold / header		
56	573337	Gasket (flue manifold)		
57	572984	Casing support bracket		
58	570717	Spring (fastening)		
59	998666	Nipple (gas - 3/4" M/M)		
60	999523	Dowel (M6x35)		
61	998782	Sight glass (burner)		
62	999227	Retaining ring (D=16mm)		
63	998672	Electrode (Ignition/Detection)		
64	998767	Cap (electrodes)		
65	998668	Burner		

ER2001211009802.001

PART.	CODE	DESCRIPTION	REF.	NOTE
66	998680	Gasket (elbow)		
67	998788	Elbow (fan)		
68	-----	Flame mirror		11
69	998786	Diaphragm (fan elbow)		
70	998654	Pipe (C.H. return)		
71	998889	Fan cable & sensor		
72	999071	Pipe (fan suction silencer)		
73	998888	Fan		
74	998681	Gasket (fan inlet)		
75	998651	Injector (G20)	A	
75	999946	Injector (G30)	B	
76	570772	Cable holder		
77	998656	Pipe (gas valve/burner jet)		
78	570615	1/8" Brass plug		
79	573022	Clamp		
80	573576	Compensation tube		
81	997151	Pump		
82	569387	Gasket 1"		
83	573175	Pipe (cylinder return)		
84	999524	Pipe (safety valve)		
85	998567	Nut (pipe - safety valve)		
86	573521	Gasket 3/8"		
87	998413	Pipe (condensate - plastic)		
88	998792	Cap (trap filling)		
89	564254	Auto air vent		
90	998412	Pipe (drain - plastic)		
91	998459	Electrode cable (resistive)		
92	999951	Cap (spark generator)		
93	998787	Condensate tray (aluminium)		
94	998808	Gasket (adhesive - 10x5 mm)		
95	998784	Fixing nut (tray rear)		
96	573768	Gasket (airtight - condensate trap)		
97	998791	Condensate trap		
98	995360	P.C.B. (main)		
99	998382	Grommet (regulation access)		
100	569720	Blind grommet		
101	999992	Fixing spring (control panel)		
102	998653	L.E.D. lens		
103	569424	On/off neon switch		
104	569390	Gasket 1/4"		
105	998777	Aluminium inspection lid		
106	573766	Front cover gasket		
107	-----	Bottom fixing bracket		11
108	998670	Main exchanger (aluminium)		
109	-----	Top fixing bracket		11
110	998423	Lip gasket (D=66 mm)		
301	998414	Case panel (side)		
302	998478	Case panel (front)		
311	997274	Probe (D.H.W.)		12
312	999133	Outdoor sensor		12

NOTE	DESCRIPTION
11	Not supplied as a spare part
12	Not illustrated

PART NOTIFICATION OF CHANGES	
	Spares listed below are not interchangeable with those listed in Ed.1
8	998458 - Temperature probe - replaces code 569236 - from serial number: 2320033400001
27	999424 - Wiring (power supply) - replaces code 999294 - from serial number: 2320033400001
92	999951 - Cap (spark generator) - modification to boiler - from serial number: 2320033400001
98	995360 - Printed circuit board (main) - replaces code 998801 - from serial number: 2320016700001