



SPARE PARTS EXPLODED VIEW  
WALL-HUNG GAS BOILERS

Models

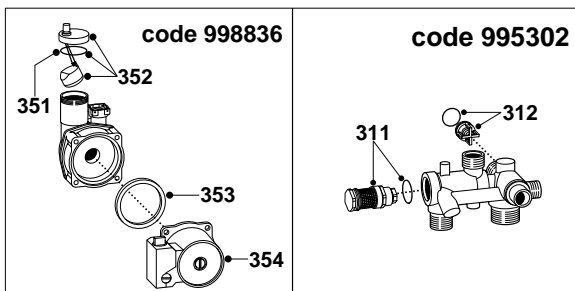
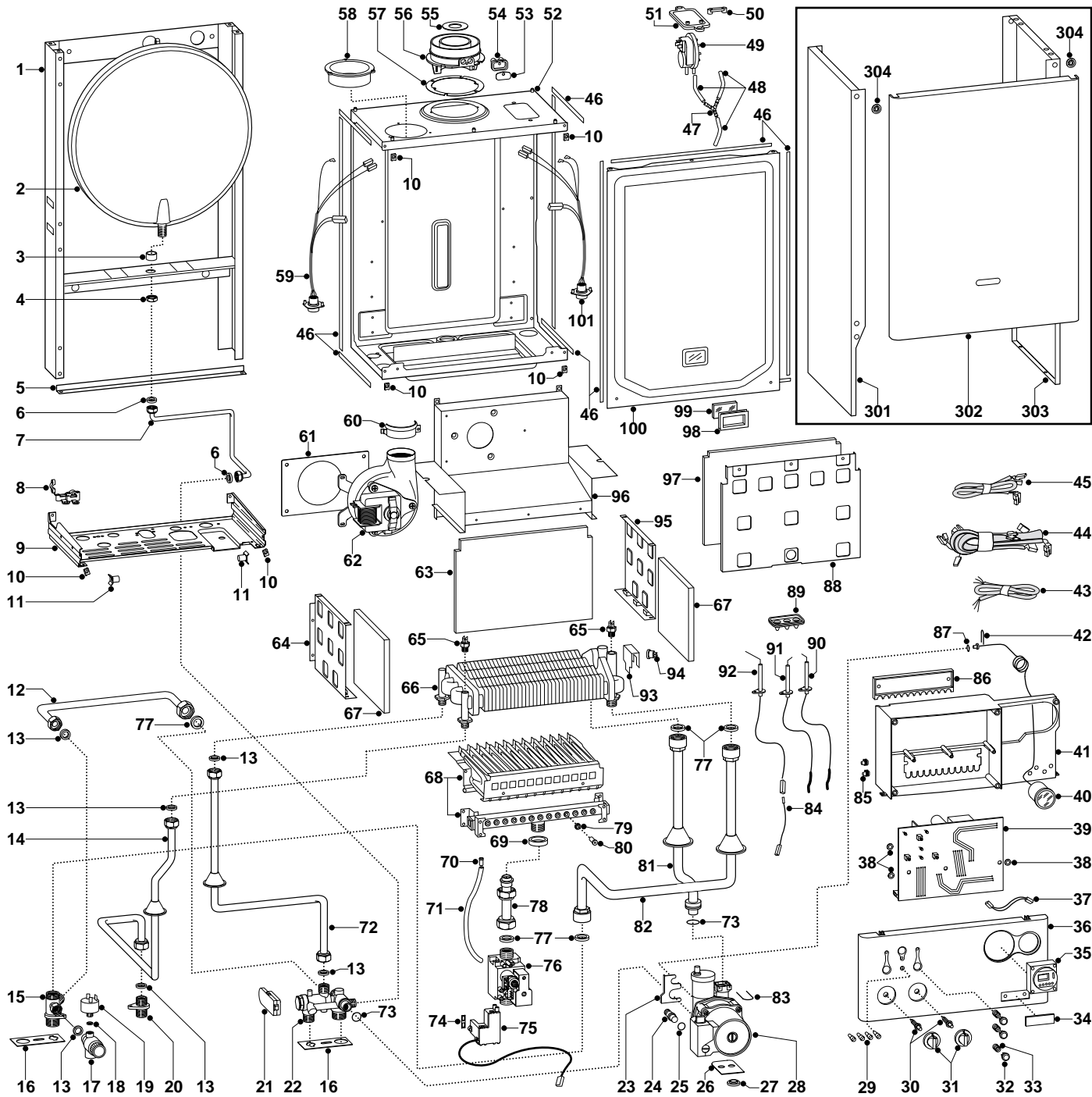
**microCOMBI 23 MFFI**

---

Edition 2

Current from Serial No:- 2320033400001 to 2320101500001





MODEL	CHARACTERISTICS	SERIAL NO: VALIDITY	REF.
MICROCOMBI 23 MFFI	METHANE	2320033400001	A
MICROCOMBI 23 MFFI	LPG	2320033400001	B

ER2000211017102001

<b>PART.</b>	<b>CODE</b>	<b>DESCRIPTION</b>	<b>REF.</b>	<b>NOTE</b>
1	-----	Frame		11
2	998616	Expansion vessel		
3	998776	Bush		
4	998581	3/8" lock nut		
5	999594	Frame support		
6	573521	Gasket 3/8"		
7	999105	Pipe (expansion vessel)		
8	998580	Cable holder		
9	-----	Hydraulic group support		11
10	570717	Spring (fastening)		
11	998569	Pivot		
12	999923	By-pass pipe		
13	573528	Gasket 1/2"		
14	999104	Pipe (D.H.W. outlet)		
15	998612	Flow group		
16	999601	Gasket (anti-vibration)		
17	998447	Safety valve (1/4" 3 Bar)		
18	569390	Gasket 1/4"		
19	998627	Low water pressure switch		
20	998611	Union (hot water outlet)		
21	999075	D.H.W. flow switch		
22	995302	Return group		
23	999162	Pump bracket		
24	999598	Pump plug		
25	997182	Gasket		
26	999602	Spacer plate (pump)		
27	999100	Lock washer		
28	998836	Pump		
29	999593	L.E.D.		
30	999592	Spindle (knobs)		
31	999596	Control knob		
32	999976	Push button		
33	999595	Spring (push button)		
34	997824	Name badge (plastic)		
35	999599	Clock		
36	999384	Control panel		
37	999721	Clock cable		
38	569711	Nylon bush (10mm)		
39	999952	Printed circuit board (T2B-FFI)		
40	999245	Pressure gauge		
41	-----	Control panel		11
42	571548	Clip (main flow switch)		
43	999521	Cable (power supply)		
44	998860	High voltage wiring		
45	999387	Low voltage wiring		
46	998516	Gasket (adhesive 10x6)		
47	573327	"Y" piece (air pressure)		
48	571575	Silicone pipe (positive signal)		
49	998484	Air pressure switch		
50	573329	Pressure intake cover		
51	997203	Support plate (air pressure switch)		
52	-----	Sealed chamber		11
53	998565	Cover (flue test point)		
54	998636	Gasket (flue test point)		
55	999980	Restrictor (flue - exhaust manifold/header)		
56	999561	Flue (exhaust manifold/header)		
57	998637	Gasket (flue collar)		
58	998595	Plug (air intake)		
59	998633	Cable (fan)		
60	998566	Fixing clamp (fan)		
61	999135	Panel (insulation - fan)		
62	999397	Fan		
63	998640	Panel (insulation - rear)		
64	998600	Panel (combustion chamber - L/H side)		
65	998458	Temperature probe		

PART.	CODE	DESCRIPTION	REF.	NOTE
66	998619	Exchanger (twin pass)		
67	998639	Panel (insulation - side)		
68	998618	Burner 12 ramp (natural gas)	A	
68	998669	Burner 12 ramp (L.P.G.)	B	
69	569443	Silicone seal		
70	573325	Rivet		
71	573576	Compensation tube		
72	999394	Pipe (cold water inlet)		
73	998424	O-ring		
74	574279	Gasket		
75	998645	Spark generator		
76	997089	Gas valve (SIT 845 SIGMA)		
77	573520	Gasket 3/4"		
78	998729	Pipe (gas valve)		
79	572138	Burner jet washer		
80	998433	Burner jet (N.G. 1.30)	A	
80	998434	Burner jet (L.P.G. 0.77)	B	
81	998731	Pipe (C.H. return)		
82	998727	Pipe (C.H. flow)		
83	997153	U-clip		
84	998862	Cable (detection electrode)		
85	569720	Blind grommet		
86	998953	Cable holder cover		
87	998517	Gasket		
88	998598	Panel (combustion chamber front)		
89	998147	Ignition electrode cable rubber		
90	998623	Electrode (Ignition R.H.)		
91	998622	Electrode (Ignition L.H.)		
92	998624	Detection electrode		
93	998582	Fixing spring (overheat thermostat)		
94	997206	Thermostat (overheat)		
95	998599	Panel (combustion chamber - R.H.side)		
96	999385	Flue hood		
97	998638	Panel (insulation - front)		
98	998076	Gasket (sight glass)		
99	998075	Sight glass		
100	999151	Panel (combustion chamber - front)		
101	999425	Wiring (air pressure switch/probe)		
301	998477	Case panel (L.H. side)		
302	999316	Case panel (front)		
303	998476	Case panel (R.H. side)		
304	995305	Washer		
311	998941	D.H.W. actuator kit		
312	999473	By-pass (Fugas)		
351	998644	O-ring (A.A.V.)		
352	998643	Auto Air Vent		
353	998738	Gasket (pump head)		
354	998961	Pump head		
361	995304	D.H.W. inlet filter		12,13
371	998716	Burner jet (full kit - N.G.)		12
372	998717	Burner jet (full kit - L.P.G.)		12

NOTE	DESCRIPTION
11	Not supplied as a spare part
12	Not illustrated
13	Flow meter filter installed on the cold water inlet

ER2000211017102001

<b>PART. NOTIFICATION OF CHANGES</b>		
<b>Spares listed below are not interchangeable with those in Ed.1</b>		
<b>12</b>	999923 - By-pass pipe	- replaces code 999941 from serial number: 2320033400001
<b>14</b>	999104 - Pipe (D.H.W. outlet)	- replaces code 999701 from serial number: 2320033400001
<b>15</b>	998612 - Flow group	- replaces code 999609 from serial number: 2320033400001
<b>21</b>	999075 - D.H.W. flow switch	- not listed on original drawing
<b>22</b>	995302 - Return group	- replaces code 999610 from serial number: 2320033400001
<b>32</b>	999976 - Push button	- replaces code 999597 from serial number: 2320033400001
<b>39</b>	999952 - Printed circuit board (T2B-FFI)	- replaces code 999724 from serial number: 2320033400001
<b>44</b>	998860 - High voltage wiring	- not listed on original drawing
<b>45</b>	999387 - Low voltage wiring	- not listed on original drawing
<b>55</b>	999980 - Restrictor (flue)	- not listed on original drawing
<b>75</b>	998645 - Spark generator	- replaces code 999919 from serial number: 2320033400001
<b>80</b>	998433 - Burner jet (NG 1.30)	- replaces code 998433 from serial number: 2320033400001
<b>80</b>	998434 - Burner jet (LPG 0.77)	- replaces code 998715 from serial number: 2320033400001
<b>82</b>	998727 - Pipe (C.H. flow)	- replaces code 999702 from serial number: 2320033400001
<b>84</b>	998862 - Cable (detection electrode)	- not listed on original drawing
<b>304</b>	995305 - Washer (front case panel)	- not listed on original drawing
<b>311</b>	998941 - D.H.W. actuator kit	- not listed on original drawing
<b>312</b>	999473 - By-pass (FUGAS)	- not listed on original drawing