



SPARE PARTS EXPLODED VIEW

WALL-HUNG GAS BOILERS

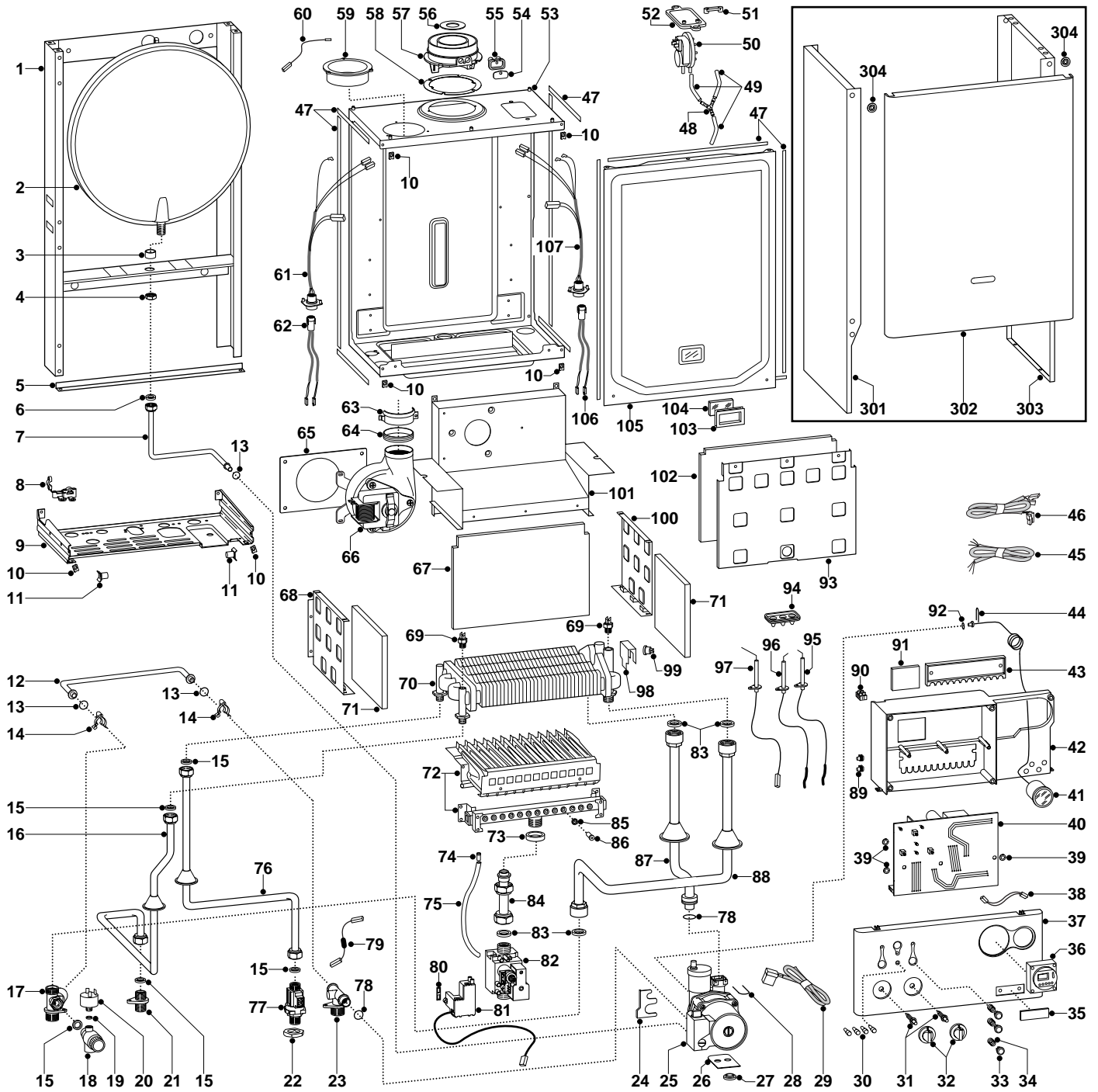
Model

microCombi 23 MFFI

Edition 4

Current from Serial No:- 2320209500001 to -----





ER20022 11017104001

MODEL	CHARACTERISTICS	SERIAL NO: VALIDITY	REF.
MicroCombi 23 MFFI	METHANE	2320209500001	A

PART.	CODE	DESCRIPTION	REF.	NOTE
1	-----	Frame		11
2	998616	Expansion vessel		
3	998776	Bush		
4	998581	3/8" lock nut		
5	995393	Frame support		
6	573521	Gasket 3/8"		
7	999525	Pipe (expansion vessel)		
8	998580	Cable holder		
9	-----	Hydraulic group support		11
10	570717	Spring (fastening)		
11	995492	Pivot		
12	998589	By-pass pipe		
13	998077	O-ring gasket		
14	998064	Spring (by-pass pipe)		
15	573528	Gasket 1/2"		
16	999104	Pipe (D.H.W. outlet)		
17	996049	Flow group (twin pass)		
18	998447	Safety valve (1/4" 3 Bar)		
19	569390	Gasket 1/4"		
20	995903	Low water pressure switch		
21	998611	Union (hot water outlet)		
22	573530	Lock nut 1/2"		
23	996047	Return group		
24	999162	Pump bracket		
25	998836	Pump		
26	995364	Spacer plate (pump)		
27	999100	Lock washer		
28	997153	U-clip		
29	999968	Cable (pump)		
30	998577	Led (L=14.2)		
31	999592	Spindle (knobs)		
32	999596	Control knob		
33	999976	Push button		
34	999595	Spring (push button)		
35	997824	Name badge (plastic)		
36	999599	Clock		
37	995461	Control panel		
38	999721	Clock cable		
39	569711	Nylon bush (10mm)		
40	999724	P.C.B. (T2 MFFI)		
41	999245	Pressure gauge		
42	-----	Control panel		11
43	998953	Cable holder cover		
44	571548	Clip (main flow switch)		
45	999521	Cable (power supply)		
46	998635	Low voltage wiring		
47	998516	Gasket (adhesive 10x6)		
48	573327	"Y" piece (air pressure)		
49	571575	Silicone pipe (positive signal)		
50	998484	Air pressure switch		
51	573329	Pressure intake cover		
52	997203	Support plate (air pressure switch)		
53	-----	Sealed chamber		11
54	998565	Cover (flue test point)		
55	998636	Gasket (flue test point)		
56	999980	Restrictor (flue - exhaust manifold/header)		
57	999561	Flue (exhaust manifold/header)		
58	998637	Gasket (flue collar)		
59	998595	Plug (air intake)		
60	999925	Earth cable (sealed chamber)		
61	995318	Fan cable & sensor		
62	995319	Fan cable & sensor		
63	998566	Fixing clamp (fan)		
64	995349	Gasket (fan)		
65	999135	Panel (insulation - fan)		

ER20022 11017104001

PART.	CODE	DESCRIPTION	REF.	NOTE
66	999397	Fan		
67	998640	Panel (insulation - rear)		
68	995893	Panel (combustion chamber - L.H. side)		
69	998458	Temperature probe		
70	998619	Exchanger (twin pass)		
71	998639	Panel (insulation - side)		
72	996158	Burner 12 ramp (natural gas)		
73	569443	Silicone seal		
74	573325	Rivet		
75	573576	Compensation tube		
76	996159	Pipe (cold water inlet)		
77	996072	D.H.W. flow switch (Bitron)		
78	998424	O-ring (C=4 D=17.04)		
79	999495	Cable (D.H.W. flow switch - 15 Ohm resistance)		
80	574279	Gasket (IP44 NAC 504)		
81	999919	Spark generator		
82	997089	Gas valve (SIT 845 SIGMA)		
83	573520	Gasket 3/4"		
84	998729	Pipe (gas valve)		
85	572138	Burner jet washer		
86	998433	Burner jet (N.G. 1.30)		
87	998731	Pipe (C.H. return)		
88	998727	Pipe (C.H. flow)		
89	569720	Blind grommet		
90	571787	Terminal board (two pole)		
91	997745	Control panel cover (rear)		
92	998517	Gasket		
93	996134	Panel (combustion chamber - front)		
94	998147	Ignition electrode cable rubber		
95	998623	Electrode (Ignition R.H.)		
96	998622	Electrode (Ignition L.H.)		
97	998624	Detection electrode		
98	998582	Fixing spring (overheat thermostat)		
99	996065	Thermostat (overheat - 103°C)		
100	995892	Panel (combustion chamber - R.H. side)		
101	999385	Flue hood		
102	995995	Panel (insulation - front)		
103	998076	Gasket (sight glass)		
104	998075	Sight glass		
105	999151	Panel (front - sealed chamber)		
106	999929	Cable (P.C.B./air pressure switch)		
107	999425	Wiring (air pressure switch/probe)		
301	998477	Case panel (L.H. side)		
302	999316	Case panel (front)		
303	998476	Case panel (R.H. side)		
304	995305	Washer		
311	995304	D.H.W. inlet filter		12 13
321	998716	Burner jet (full kit - N.G.)		12
322	998717	Burner jet (full kit - L.P.G.)		12

NOTE	DESCRIPTION
11	Not supplied as a spare part
12	Not illustrated
13	Flow meter filter installed on the cold water inlet

ER2002211017104001

PART. NOTIFICATION OF CHANGES		
	Spares listed below are not interchangeable with those in Ed.1, Ed.2 and Ed.3	
5	995393 - Frame support	- replaces code 999594 from serial number: 2320209500001
11	995492 - Pivot	- replaces code 998569 from serial number: 2320209500001
12	998589 - By-pass pipe	- replaces code 999923 from serial number: 2320209500001
14	998064 - Spring (by-pass pipe)	- not listed on original drawing
17	996049 - Flow group	- replaces code 998612 from serial number: 2320209500001
20	995903 - Low water pressure switch	- replaces code 998627 from serial number: 2320209500001
22	573530 - Lock nut (½")	- not listed on original drawing
23	996047 - Return group	- replaces code 995344 from serial number: 2320209500001
26	995364 - Spacer plate (pump)	- replaces code 999602 from serial number: 2320209500001
29	999968 - Cable (pump)	- not listed on original drawing
30	998577 - L.E.D. (L=14.2)	- replaces code 999593 from serial number: 2320209500001
37	995461 - Control panel	- replaces code 999384 from serial number: 2320209500001
40	999724 - P.C.B. (T2 MFFI)	- replaces code 999410 from serial number: 2320209500001
46	998635 - Low voltage wiring	- replaces code 999387 from serial number: 2320209500001
60	999925 - Earth cable (sealed chamber)	- not listed on original drawing
61	995318 - Cable (fan/sensor)	- replaces code 998633 from serial number: 2320209500001
62	995319 - Cable (P.C.B./fan)	- not listed on original drawing
64	995349 - Gasket (fan)	- replaces code 995320 from serial number: 2320209500001
68	995893 - Panel (combustion chamber (L.H.)	- replaces code 998600 from serial number: 2320209500001
72	996158 - Burner (12 ramp - N.G.)	- replaces code 998618 from serial number: 2320209500001
76	996159 - Pipe (cold water inlet)	- replaces code 999394 from serial number: 2320209500001
77	996072 - D.H.W. flow switch (Bitron)	- not listed on original drawing (new design)
79	999495 - Cable (D.H.W. flow switch - 15 Ohm)	- not listed on original drawing
81	999919 - Spark generator	- replaces code 998645 from serial number: 2320209500001
90	571787 - Terminal board (two pole)	- not listed on original drawing
91	997745 - Control panel cover (rear)	- not listed on original drawing
93	996134 - Panel (combustion chamber - front)	- replaces code 999151 from serial number: 2320209500001
99	996065 - Thermostat (overheat 103°C)	- replaces code 997206 from serial number: 2320209500001
100	995892 - Panel (combustion chamber - R.H.)	- replaces code 998599 from serial number: 2320209500001
102	995995 - Panel (insulation - front)	- replaces code 995995 from serial number: 2320209500001
106	999929 - Cable (P.C.B./air pressure switch)	- not listed on original drawing