



SPARE PARTS EXPLODED VIEW
GAS WALL BOILERS

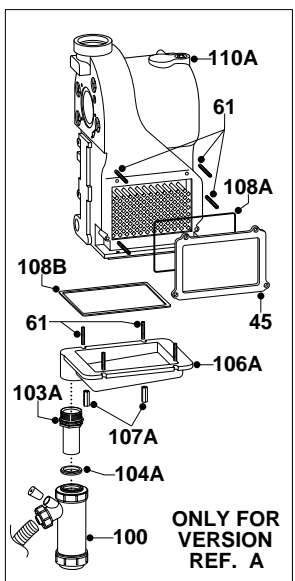
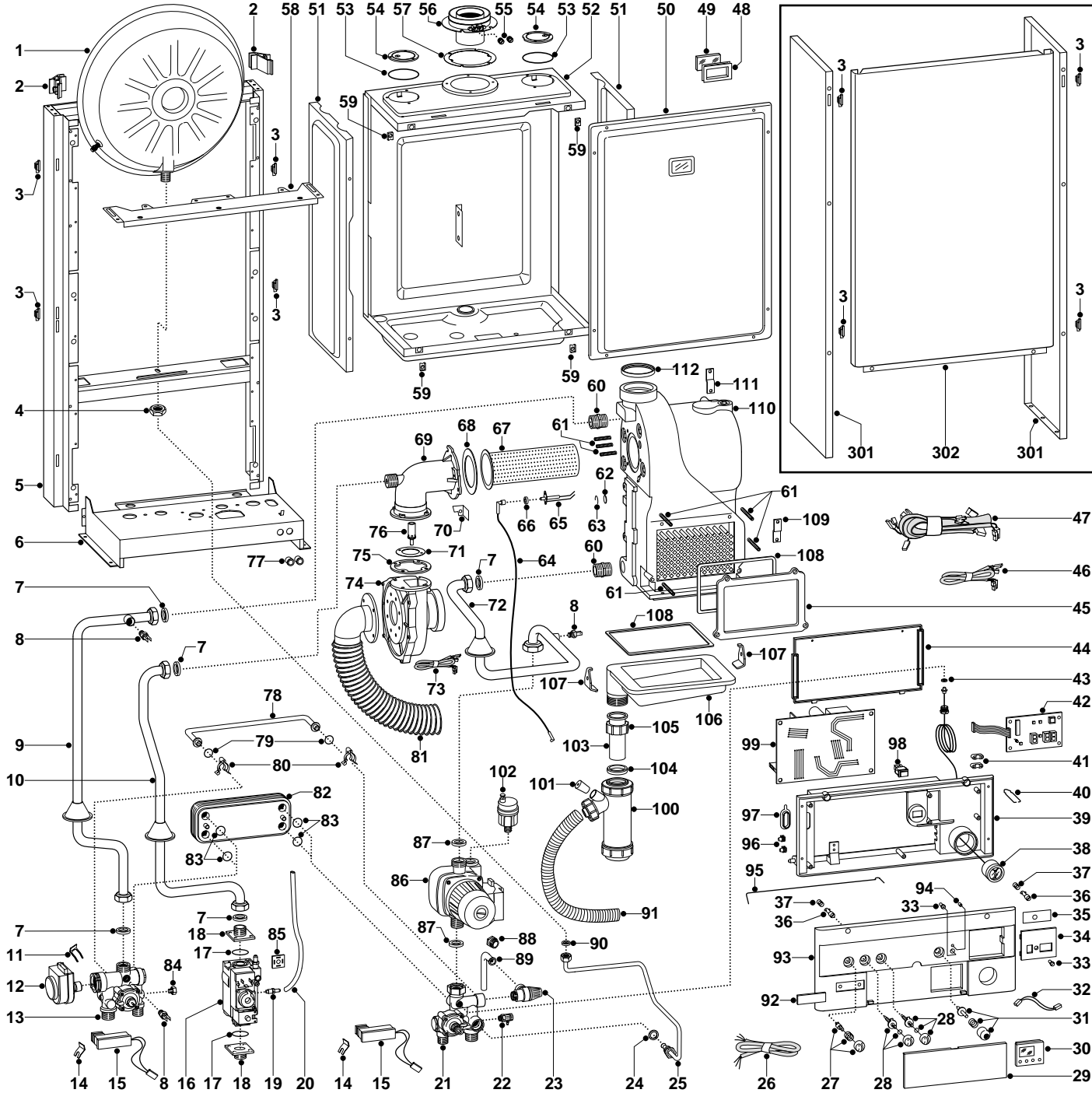
Model

ECOGENUS 24 MFFI

Edition 3

Current from Serial No: 232011800001 to -----





ER2001211016603001

MODELS	CHARACTERISTICS	SERIAL NO: VALIDITY	REF.
ECOGENUS 24 MFFI	METHANE	232011800001	A
ECOGENUS 24 MFFI	LPG	232011800001	B

PART.	CODE	DESCRIPTION	REF.	NOTE
1	573294	Expansion vessel		
2	999679	Expansion vessel insert		
3	574302	Casing support bracket (Plastic)		
4	573244	3/8" lock nut		
5	-----	Frame		11
6	-----	Hydraulic group support		11
7	573520	Gasket 3/4"		
8	998458	Temperature probe		
9	998655	Pipe (C.H. flow)		
10	998656	Pipe (gas valve/burner jet)		
11	997077	Fixing clip (motor)		
12	997147	Motor (3-Way valve)		
13	998127	Flow group		
14	573824	Bracket (m/flow microswitch)		
15	995296	Wired microswitch		
16	571438	Gas valve		
17	565048	O-ring gasket (gas valve)		
18	999536	Union (gas valve)		
19	573793	Intake (pressure - control valve)		
20	573576	Compensation tube		
21	998144	Return group		
22	573727	Drain valve		
23	573172	Safety valve (1/2" 3 bar)		
24	573528	Gasket 1/2"		
25	573311	Pipe (expansion vessel)		
26	999424	Wiring (power supply)		
27	573302	Summer/Winter selector kit		
28	998747	Control knob kit		
29	998661	Door (instruction/time clock)		
30	997207	Time clock		
31	998772	On/off push button kit		
32	995366	Connection cable (time clock)		
33	998751	Button (reset)		
34	999073	Cover (display)		
35	998766	Film (display)		
36	998381	Pin (front cover)		
37	998739	Fixing spring (front cover)		
38	571649	Pressure gauge		
39	-----	Control panel		11
40	999993	Fixing spring (control panel)		
41	571562	Cable clamp		
42	998765	P.C.B. (display)		
43	569390	Gasket 1/4"		
44	-----	Cover (connectors)		11
45	998777	Aluminium inspection lid		
46	999426	Low voltage wiring		
47	998676	High voltage wiring		
48	998076	Gasket (sight glass)		
49	998075	Sight glass		
50	574104	Panel (sealed chamber - front)		
51	573247	Panel (sealed chamber - side)		
52	-----	Sealed chamber		11
53	573865	Flue gasket		
54	573330	Air return cover		
55	573326	Flue intake plug		
56	999400	Flue exhaust manifold / header		
57	573337	Gasket (flue manifold)		
58	572984	Casing support bracket		
59	570717	Spring (fastening)		
60	998666	Nipple (gas - 3/4" M/M)		
61	999523	Dowel (M6x35)		
62	998782	Sight glass (burner)		
63	999227	Retaining ring (D=16mm)		
64	995983	Cable (ignition electrode)		
65	995964	Electrode (Ignition/Detection)		

PART.	CODE	DESCRIPTION	REF.	NOTE
66	998769	Gasket (electrode insulation)		
67	998668	Burner		
68	998680	Gasket (elbow)		
69	998788	Elbow (fan)		
70	-----	Flame mirror		11
71	998786	Diaphragm (fan elbow)		
72	998654	Pipe (C.H. return)		
73	998889	Fan cable & sensor		
74	998888	Fan		
75	998681	Gasket (fan inlet)		
76	998651	Injector (G20)	A	
76	999946	Injector (G30)	B	
77	570772	Cable holder		
78	998065	By-pass pipe		
79	998077	O-ring gasket		
80	998064	Spring (by-pass pipe)		
81	999071	Pipe (fan suction silencer)		
82	573295	Secondary exchanger (p-type 27kW)		
83	573825	O-Ring (secondary exchanger)		
84	570615	1/8" Brass plug		
85	573022	Clamp		
86	997151	Pump		
87	569387	Gasket 1"		
88	998567	Nut (pipe - safety valve)		
89	999524	Pipe (safety valve)		
90	573521	Gasket 3/8"		
91	998413	Pipe (condensate - plastic)		
92	997824	Name badge (plastic)		
93	995462	Control panel (front)		
94	998653	L.E.D. lens		
95	999992	Fixing spring (control panel)		
96	569720	Blind grommet		
97	998382	Grommet (regulation access)		
98	569424	On/off neon switch		
99	995975	P.C.B. (main)		
100	998791	Condensate trap		
101	998792	Cap (trap filling)		
102	564254	Auto air vent		
103	999452	Pipe (drain - plastic)	B	
103A	998412	Pipe (drain - plastic)	A	
104	995294	Gasket (airtight - condensate trap)	B	
104A	573768	Gasket (airtight - condensate trap)	A	
105	999991	1"1/4 ring nut (condense drain)	B	
106	999455	Condensate tray	B	
106A	998787	Condensate tray (aluminium)	A	
107	999999	Fixing square (condensate tray)	B	
107A	998784	Fixing nut (tray rear)	A	
108	999497	Seal (silicone - expanded - 6x8)	B	
108A	573766	Front cover gasket	A	
108B	998808	Gasket (adhesive - 10x5 mm)	A	
109	-----	Bottom fixing bracket		11
110	999675	Main exchanger (aluminium)	B	
110A	998670	Main exchanger (aluminium)	A	
111	-----	Top fixing bracket		11
112	998423	Lip gasket (D=66 mm)		
301	998414	Case panel (side)		
302	998478	Case panel (front)		
311	999133	Outdoor sensor		12

NOTE	DESCRIPTION
11	Not supplied as a spare part
12	Not illustrated

PART. NOTIFICATION OF CHANGES	
	Spares listed below are not interchangeable with those in Ed.2
32	995366 - Connection cable (time clock) - not listed on original drawing
64	995983 - Cable (electrode) - replaces 998459 from serial number: 2320118000001
65	998964 - Electrode (ignition/detection) - replaces 998672 from serial number: 2320118000001
66	998769 - Gasket (insulation - electrode) - not listed on original drawing
92	997824 - Name badge (plastic) - not listed on original drawing
93	995462 - Control panel (front) - replaces 998778 from serial number: 2320118000001
99	995975 - P.C.B. (main) - replaces 998801 from serial number: 2320118000001
103	999452 - Pipe (drain - plastic - LPG) - not listed on original drawing
103A	998412 - Pipe (drain - plastic - NG) - not listed on original drawing
104	995294 - Gasket (air tight - condensate trap - LPG) - not listed on original drawing
104A	573768 - Gasket (air tight - condensate trap - NG) - not listed on original drawing
105	999991 - Ring nut (1¼" - condense drain - LPG) - not listed on original drawing
106	999455 - Condensate tray (LPG) - not listed on original drawing
107	999999 - Fixing square (condensate tray - LPG) - not listed on original drawing
108	999497 - Seal (silicone - expanded - 6x8) - not listed on original drawing
110	999675 - Main exchanger (aluminium - LPG) - not listed on original drawing
110A	998670 - Main exchanger (aluminium - NG) - not listed on original drawing