



SPARE PARTS EXPLODED VIEW  
WALL-HUNG GAS BOILERS

Models

**microGENUS 23 MFFI**

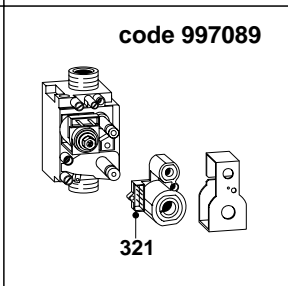
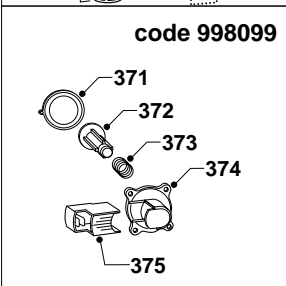
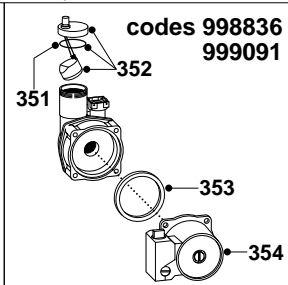
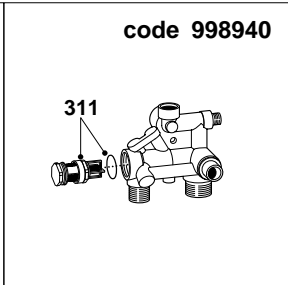
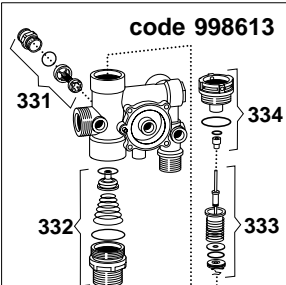
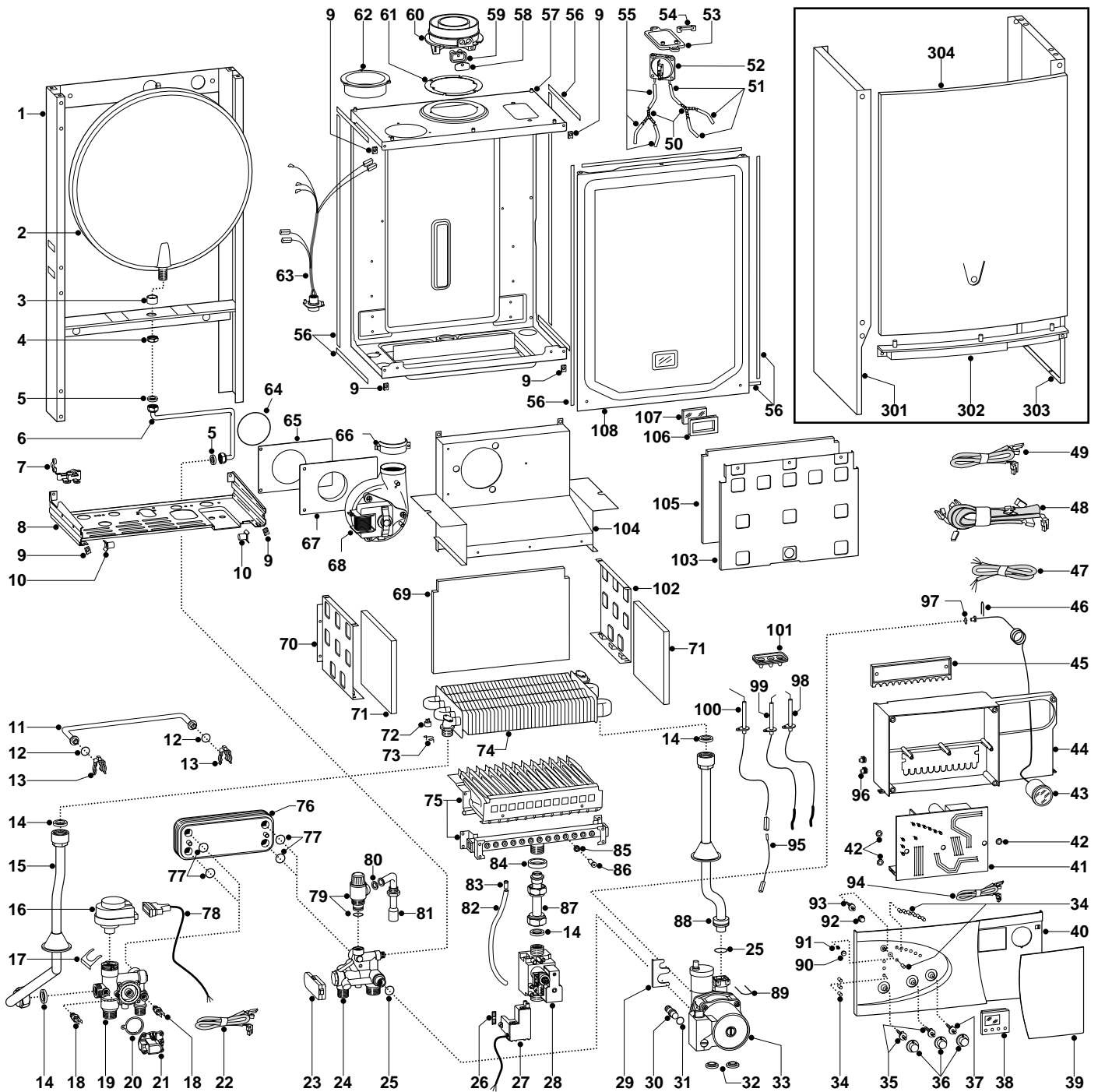
**microGENUS 27 MFFI**

---

Edition 2

Current from Serial No:- 2320005600001to 2320021400002





MODELS	CHARACTERISTICS	SERIAL NO: VALIDITY	REF.
MICROGENUS 23 MFFI	METHANE	2320005600001	A
MICROGENUS 23 MFFI	LPG	2320005600001	B
MICROGENUS 27 MFFI	METHANE	2320005600001	C
MICROGENUS 27 MFFI	LPG	2320005600001	D

ER2000211017002001

PART.	CODE	DESCRIPTION	REF.	NOTE
1	-----	Frame		11
2	998616	Expansion vessel		
3	998776	Bush		
4	998581	3/8" lock nut		
5	573521	Gasket 3/8"		
6	999102	Pipe (expansion vessel)		
7	998580	Cable holder		
8	-----	Hydraulic group support		11
9	570717	Spring (fastening)		
10	998569	Pivot		
11	998589	By-pass pipe		
12	998077	O-ring gasket		
13	998064	Spring (by-pass pipe)		
14	573520	Gasket 3/4"		
15	999103	Pipe (flow)		
16	997147	Motor (3-Way valve)		
17	997077	Fixing clip (motor)		
18	569236	Temperature probe (C.H.W.)		
19	998613	Flow group		
20	571547	Diaphragm (main flow switch)		
21	998099	Main circuit flow switch		
22	998632	Cable (temperature probes)		
23	999075	D.H.W. flow switch		
24	998940	Return group		
25	998424	O-ring		
26	574279	Gasket		
27	998645	Spark generator		
28	997089	Gas valve (SIT 845 SIGMA)		
29	999162	Pump bracket		
30	998568	Pump plug		
31	997182	Gasket		
32	999100	Lock washer		
33	998836	Pump	AB	
33	999091	Pump	CD	
34	998570	L.E.D.		
35	998575	Spindle (temperature knob)		
36	998603	Control knob		
37	998572	Spindle (on/off knob)		
38	997207	Time clock		
39	999059	Front cover		
40	998824	Control panel		
41	998947	Printed circuit board (CMP1-FFI)		
42	569711	Nylon bush (10mm)		
43	999245	Pressure gauge		
44	998952	Control panel		
45	998953	Cable holder cover		
46	571548	Clip (main flow switch)		
47	998861	Cable (power supply)		
48	999153	High voltage wiring		
49	998863	Low voltage wiring		
50	573327	"Y" piece (air pressure)		
51	571575	Silicone pipe (positive signal)		
52	571651	Air pressure switch	CD	
52	573989	Air pressure switch	AB	
53	997203	Support plate (air pressure switch)		
54	573329	Pressure intake cover		
55	569662	Silicone pipe		
56	998516	Gasket (adhesive 10x6)		
57	-----	Sealed chamber		11
58	998565	Cover (flue test point)		
59	998636	Gasket (flue test point)		
60	998602	Flue (exhaust manifold/header)		
61	998637	Gasket (flue collar)		
62	998595	Plug (air intake)		
63	998648	Cable (fan/air pressure switch)		

EF20002 11017002001

PART.	CODE	DESCRIPTION	REF.	NOTE
64	998943	O-ring (2.65x10.27)	CD	
65	999135	Panel (insulation - fan)	AB	
66	998566	Fixing clamp (fan)		
67	998601	Fixing plate (fan)	AB	
68	998894	Fan	CD	
68	999204	Fan	AB	
69	998640	Panel (insulation - rear)	AB	
69	998896	Panel (insulation - rear)	CD	
70	998600	Panel (combustion chamber - L/H side)	AB	
70	998964	Panel (combustion chamber - L/H side)	CD	
71	998639	Panel (insulation - side)		
72	997206	Thermostat (overheat)		
73	998583	Fixing spring (overheat thermostat)		
74	998620	Main exchanger	AB	
74	998893	Main exchanger	CD	
75	998618	Burner 12 ramp (natural gas)	A	
75	998669	Burner 12 ramp (LPG)	B	
75	998887	Burner 14 ramp (natural gas)	C	
75	998939	Burner 14 ramp (LPG)	D	
76	571646	Secondary exchanger (p-type 23kW)	AB	
76	573295	Secondary exchanger (p-type 27kW)	CD	
77	573825	O-Ring (secondary exchanger)		
78	998629	Cable (3-way valve motor)		
79	573172	Safety valve (1/2" 3 bar)		
80	573528	Gasket 1/2"		
81	998019	Pipe (safety valve outlet)		
82	573576	Compensation tube		
83	573325	Rivet		
84	569443	Silicone seal		
85	572138	Burner jet washer		
86	998433	Burner jet (NG 1.30)	AC	
86	998434	Burner jet (LPG 0.77)	BD	
87	998729	Pipe (gas valve)		
88	998732	Pipe (C.H. return)		
89	997153	U-clip		
90	998604	Reset button		
91	998571	Reset button (insert)		
92	999148	Selector button (comfort)		
93	998579	Spindle (comfort)		
94	999406	Cable (time clock)		
95	998862	Cable (detection electrode)		
96	569720	Blind grommet		
97	998517	Gasket		
98	998623	Electrode (Ignition R/H)		
99	998622	Electrode (Ignition L/H)		
100	998624	Detection electrode		
101	998147	Ignition electrode cable rubber		
102	998599	Panel (combustion chamber - R/H side)	AB	
102	998963	Panel (combustion chamber - R/H side)	CD	
103	998598	Panel (combustion chamber - front)	AB	
103	998924	Panel (combustion chamber - front)	CD	
104	998925	Flue hood	CD	
104	999210	Flue hood	AB	
105	998638	Panel (insulation - front)	AB	
105	998895	Panel (insulation - front)	CD	
106	998076	Gasket (sight glass)		
107	998075	Sight glass		
108	999151	Panel (front - sealed chamber)		
301	998477	Case panel (L.H. side)		
302	998596	Insert case		
303	998476	Case panel (R.H. side)		
304	998607	Panel (front case)		
311	998941	D.H.W. actuator kit		

PART.	CODE	DESCRIPTION	REF.	NOTE
321	997029	Operator coils (Sit Sigma)		
331	998490	Central heating by-pass kit		
332	998718	3-Way spring kit (C.H.)		
333	998975	3-Way spring kit (D.H.W.)		
334	998974	Heating actuator bush		
351	998644	O-ring (A.A.V.)		
352	998643	Auto Air Vent		
353	998738	Gasket (pump head)		
354	998961	Pump head	AB	
354	999207	Pump head	CD	
371	571547	Diaphragm (main flow switch)		
372	571772	Magnet (main flow switch)		
373	571771	Spring (main flow switch)		
374	571770	Main flow switch top cap		
375	998172	Main flow switch reed system		
381	998716	Burner jet (full kit - NG)		12
382	998717	Burner jet (full kit - LPG)		12

NOTE	DESCRIPTION
11	Not supplied as a spare part
12	Not illustrated

PART.	NOTIFICATION OF CHANGES
	<b>Spares listed below are not interchangeable with those in Ed.1</b>
6	999102 - Pipe (expansion vessel) - replaces code 998584 from serial number: 2320005600001
15	999103 - Pipe (flow) - replaces code 998815 from serial number: 2320005600001
29	999162 - Pump bracket - replaces code 998606 from serial number: 2320005600001
33	999091 - Pump (27kW) - replaces code 998336 from serial number: 2320005600001
39	999059 - Front cover - replaces code 998827 from serial number: 2320005600001
43	999245 - Pressure guage - replaces code 998625 from serial number: 2320005600001
44	998952 - Control panel - not listed on original drawing
45	998953 - Cable holder cover - not listed on original drawing
48	999153 - High voltage wiring - replaces code 998859 from serial number: 2320005600001
68	999204 - Fan (23kW) - replaces code 998621 from serial number: 2320005600001
81	998019 - Pipe (safety valve outlet) - replaces code 573176 from serial number: 2320005600001
86	998433 - Burner jet (NG 1.30) - replaces code 998714 from serial number: 2320005600001
86	999103 - Pipe (flow) - replaces code 998815 from serial number: 2320005600001
92	999148 - Selector knob (comfort) - replaces code 998605 from serial number: 2320005600001
94	999406 - Cable (time clock) - not listed on original drawing
102	998963 - Panel (combustion chamber - R/H) - replaces code 998599 from serial number: 2320005600001
104	999245 - Pressure guage - replaces code 998625 from serial number: 2320005600001
108	999151 - Panel (sealed chamber - front) - replaces code 998610 from serial number: 2320005600001
333	998975 - 3-Way spring kit (DHW) - replaces code 571447 from serial number: 2320005600001
334	998974 - Heating actuator bush - replaces code 998013 from serial number: 2320005600001
354	999207 - Pump head (27kW) - replaces code 998961 from serial number: 2320005600001