



SPARE PARTS EXPLODED VIEW
WALL-HUNG GAS BOILERS

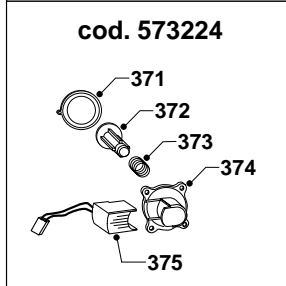
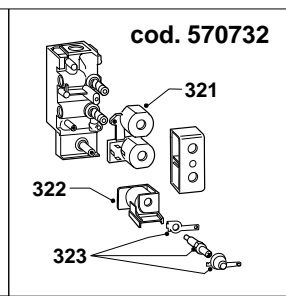
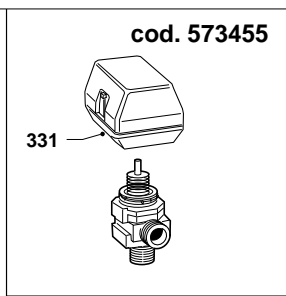
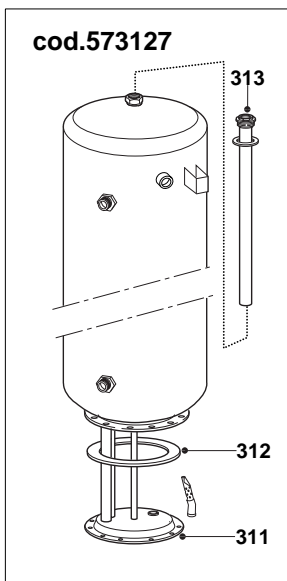
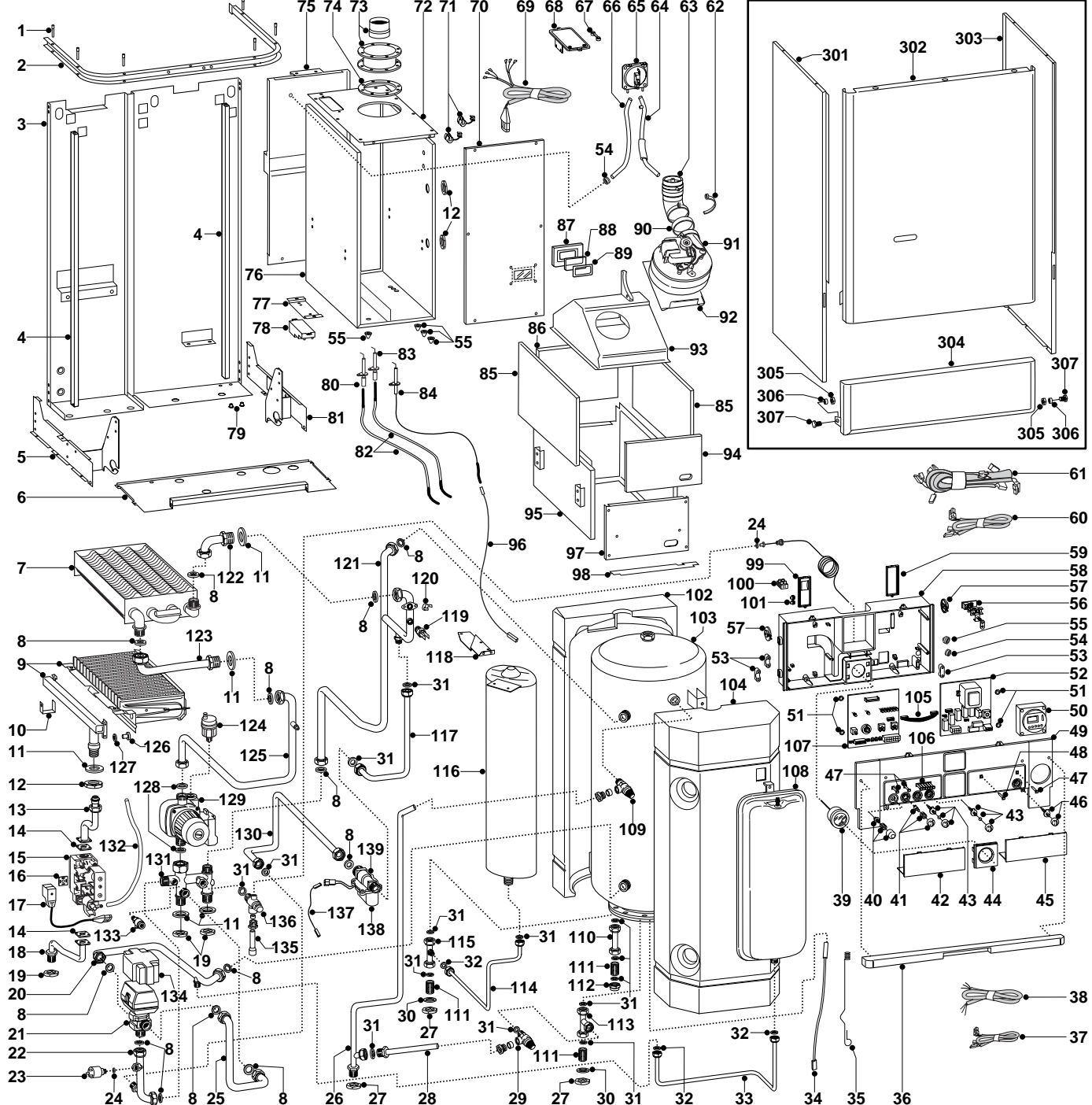
Models

GENUS 27 BFFI UK

Edition 1

Current from Serial No:- 980106154 to 2320020100002





MODELS	CHARACTERISTICS	SERIAL NO. VALIDITY	REF.
GENUS 27 BFFI UK	METANO	980106154	A
GENUS 27 BFFI UK	GPL	980106851	B

PART.	CODE	DESCRIPTION	REF.	NOTE
1	570603	Pivot		
2	997104	Case panels support arc		
3	-----	Boiler frame		11
4	573106	Case panel support (L.H. + R.H.)		
5	573117	Left holder control panel bracket		
6	573185	Cover plate (underside)		
7	573435	Main heat exchanger		
8	573520	Gasket 3/4"		
9	572625	Main burner (Natural gas)	A	
9	572626	Main burner (L.P.G.)	B	
10	573124	Main burner support		
11	569413	Silent washer 37x26x2		
12	569446	Brass lock nut 3/4"		
13	572738	Pipe (gas valve to burner)		
14	569254	Gas valve gasket		
15	570732	Gas valve (sit tandem)		
16	573022	Clamp		
17	573286	Gas valve cable		
18	573057	Pipe (gas inlet)		
19	573523	Lock nut 3/4"		
20	570581	Pipe (motorised valve to cylinder)		
21	573455	Motorized valve body		
22	573090	Pipe (motorised valve outlet)		
23	570605	Pump pressure switch		
24	569390	Gasket 1/4"		
25	570576	Pipe (motorised valve inlet)		
26	997100	Pipe (cylinder discharge)		
27	573530	Lock nut 1/2"		
28	997101	Hose (expansion relief to discharge)		
29	573139	Expansion relief valve 6 bar		
30	569415	Gasket 30x22x2		
31	573528	Gasket 1/2"		
32	573521	Gasket 3/8"		
33	570587	Pipe (expansion vessel C.H.)		
34	573015	Temp probe (D.H.W.)		
35	570542	D.H.W. probe spring		
36	-----	Plastic insert		11
37	573101	Cable (time clock)		
38	573335	Main power supply cord		
39	571649	Pressure gauge		
40	571982	Reset button		
41	571983	Summer/winter selector knob		
42	571627	Inspection cover L.H.		
43	571984	Control knob kit		
44	572384	Pressure gauge surround		
45	571623	Inspection cover R.H.		
46	571985	On/off knob		
47	571550	Power indicator L.E.D.		
48	572658	Flue L.E.D. cover (gree)		
49	573116	Control panel (front)		
50	569538	Time clock		
51	569711	Nylon bush 10mm		
52	952930	P.C.B. EA FFI		
53	571562	Cable clamp		
54	573534	Cable holder D.75		
55	569458	Cable holders silicone D.2		
56	-----	Terminal board		11
57	571558	Control panel rotor		
58	572993	Control panel (rear)		
59	571967	Cable cover (R.H.)		
60	573374	Low voltage wiring		
61	573195	High voltage wiring		
62	569434	Venturi collar		
63	572382	Venturi device		
64	571819	Silicone pipe (negative signal)		

PART.	CODE	DESCRIPTION	REF.	NOTE
65	571652	Air pressure switch		
66	571575	Silicone pipe (positive signal)		
67	573329	Pressure gauge pressure intake cover		
68	997203	Air pressure switch support plate		
69	573193	Cable (fan/air pressure switch)		
70	573114	Sealed chamber from panel		
71	570561	Fan power supply cord clamp		
72	573103	Sealed chamber cover		
73	571166	Coaxial flue turret		
74	573447	Neoprene gasket 95x128mm		
75	572856	Sealed chamber rear cover		
76	-----	Sealed chamber		11
77	573493	Spark generator support bracket		
78	573023	Igniter		
79	570772	Cable holder		
80	569561	Ignition electrode (L.H.)		
81	573118	Control panel bracket holder (R.H.)		
82	573440	Cable (ignition electrode)		
83	569560	Ignition electrode (R.H.)		
84	573441	Detection electrode		
85	573443	Side insulation panel		
86	573445	Back insulation panel		
87	573566	View window holder		
88	573567	View window glass		
89	569442	View window seal		
90	573446	Fan seal (silicone)		
91	573434	Fan		
92	573049	Fan support plate		
93	570516	Flue hood		
94	573444	Front insulation panel		
95	570515	Combustion chamber		
96	571657	Cable (detection electrode/P.C.B.)		
97	570553	Panel (combustion chamber front)		
98	573113	Air diffuser		
99	571968	Cable cover (L.H.)		
100	573091	Three pole terminal board		
101	569720	Blind grommet		
102	570534	Cylinder polyurethane shell (rear)		
103	573127	D.H.W. cylinder 60 l		
104	570535	Cylinder polyurethane shell (front)		
105	952610	P.C.B. cable		
106	571551	Temperature L.E.D. bank		
107	953082	P.C.B. EB C MI/MFFI		
108	573456	Expansion vessel (C.H.)		
109	573140	T + P valve 7 bar		
110	573187	Pipe (secondary return)		
111	573531	Brass nipple 1/2"		
112	570571	Brass cap 1/2"		
113	573496	Pipe (cold water inlet)		
114	997099	Pipe (D.H.W. expansion vessel)		
115	573115	Pipe (D.H.W. outlet)		
116	998122	Expansion vessel (D.H.W.)		
117	572718	Pipe (main flow switch positive)		
118	570959	Support bracket (D.H.W. vessel)		
119	569236	Temp probe (C.H.W.)		
120	571648	Overheat thermostat		
121	572717	Pipe (main circuit)		
122	570584	Pipe (main heat exchanger return)		
123	570585	Pipe (main heat exchanger flow)		
124	564254	Automatic air release valve		
125	572716	Pipe (pump to main heat exchanger)		
126	570248	Burner jet 1.25mm	A	
126	570251	Burner jet 0.72mm	B	
127	572138	Burner jet washer		
128	569387	Gasket 1"		

PART.	CODE	DESCRIPTION	REF.	NOTE
129	573123	Pump		
130	572719	Pipe (main flow switch negative)		
131	572715	Hydraulic group		
132	573576	Compensation tube		
133	573727	Manual vent cock		
134	572858	Cover (motorised valve)		
135	573190	Drainage pipe		
136	569292	Safety valve 3 bar		
137	573093	Pump pressure switch cable		
138	573224	Group circulator consent pressure gauge		
139	572728	By-bass body		
141	571409	Bolts and expansion caps full kit		
142	573358	Boiler template: top plate		
143	573356	Boiler template: middle plate		
144	573357	Boiler template: bottom plate		
145	573094	Valve kit: gas inlet pipe		
146	571000	Valve kit: gas cock		
147	570817	Valve kit: C.H.W. flow-return pipe		
148	570744	Valve kit: C.H.W. flow-return cock		
149	573354	Valve kit: D.H.W. outlet pipe		
150	573353	Valve kit: D.W. inlet pipe		
151	573359	Valve kit: pressure reducing valve 3.5 bar		
152	573355	Valve kit: D.W. tail pipe		
153	570743	Valve kit: D.W. inlet cock		
282	570608	Spring clips for electrodes		
301	573141	Panel (L.H. side)		
302	570599	Panel (front case)		
303	573142	Panel (R.H. side))		
304	570557	Case door		
305	573149	Lock nut M6		
306	573068	Bush		
307	573147	Bolt M6x16		
311	570441	Cylinder flange		
312	570440	Inox cylinder flange		
313	570439	Cylinder anode		
321	570712	Sit tandem gas valve operator coils		
322	573740	SIT Tandem Modureg coil		
323	573745	Gas modulator cartridge		
331	570711	Motorised valve motor		
361	569281	Burner jet 1.25 full kit (Natural gas)		12
362	569282	Burner jet 0.72 full kit (LPG)		12
371	571547	Main flow switch membrane		
372	571772	Main flow switch magnet		
373	571771	Main flow switch spring		
374	571770	Main flow switch top cap		
375	573138	Main flow switch reed system		
903	573782	M4x12mm pan head screw/nickel-plated		
905	570799	M4x10mm pan head screw/nickel-plated		
907	570803	M4x6mm pan head screw		
908	997778	M4x8 mm pan head screw/nickel-plated		
909	997780	3.2x13mm pan head self tapping screw		
911	997779	3.9x5,5mm pan head self tapping screw		
912	997777	4.2x9.5mm pan head self tapping screw		

PART.	CODE	DESCRIPTION	REF.	NOTE
913	997781	4.2x16mm pan self tapping screw		
915	997776	3.5x9.5mm pan head self tapping screw		
918	570791	M4x16mm slotted cheese head screw		

NOTE	DESCRIPTION
11	Not supplied as a spare part
12	Not illustrated

PART.	NOTIFICATION OF CHANGES
313	291095 - Anode (flexible) - available as optional extra in place of 570439, use in conjunction with 230511
313	230511 - Nut (flexible anode) - available as optional extra in place of 570439, use in conjunction with 291095